

ECL solution

Selection guide

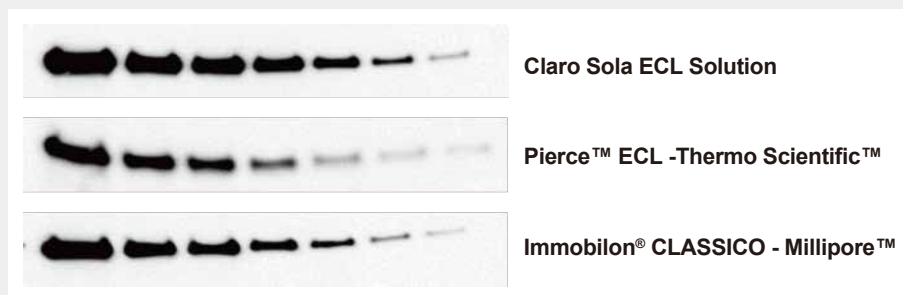
Various levels of sensitivity available for your Western blotting

BioD offers a family of products with different sensitivity, allowing from picogram to femtogram detection range. Our proprietary technology enables fine-tuning of signal intensity to obtain the best assay sensitivity and signal duration for every experimental need.

Cat. No.	Product Name	Pack Size	Competitors
A0030	Claro Sola	2×125ml	PIERCE™ ECL PLUS - THERMO SCIENTIFIC™ IMMOBILON® CLASSICO - MILLIPORE™ WESTERN LIGHTNING™ PLUS - PERKINELMER WESTERNBRIGHT™ ECL - ADVANSTA CLARITY™ - BIO-RAD
A0031	Claro Mucho	2×125ml	SUPERSIGNAL™ WEST DURA - THERMO SCIENTIFIC™ AMERSHAM™ ECL™ PRIME - GE HEALTHCARE SUPERSIGNAL™ WEST PICO PLUS - THERMO SCIENTIFIC™ IMMOBILON® CRESCENDO - MILLIPORE™ WESTERNBRIGHT™ QUANTUM™ - ADVANSTA
A0032	Claro Supremo	2×50ml	SUPERSIGNAL™ WEST DURA - THERMO SCIENTIFIC™ AMERSHAM™ ECL PRIME™ - GE HEALTHCARE IMMOBILON® FORTE - MILLIPORE™ IMMOBILON® - MILLIPORE™ WESTERN LIGHTNING™ PRO - PERKINELMER CLARITY MAX™ - BIO-RAD
A0033	Claro SupremoPlus	2×50ml	SUPERSIGNAL™ WEST FEMTO - THERMO SCIENTIFIC™ AMERSHAM™ ECL SELECT™ - GE HEALTHCARE WESTERNBRIGHT™ SIRIUS™ - ADVANSTA WESTERN LIGHTNING™ ULTRA - PERKINELMER
A0074	Claro Extremo	2×50ml	NO COMPETITORS AT THE SAME PERFORMANCE LEVEL

Claro Sola ECL Solution

Substrate for very abundant target and sample.
Stable light output optimal for low picogram detection level.

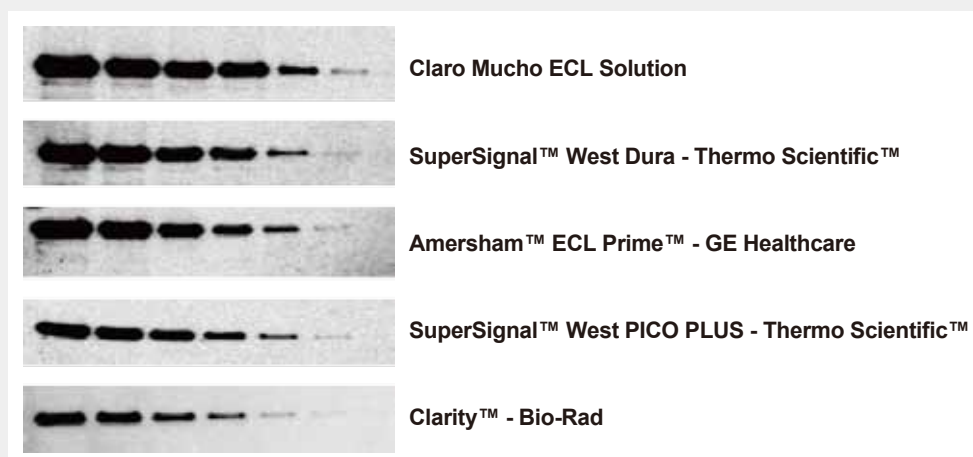


Western blotting detection of HDAC-1 on Hela cell lysate with Claro Sola ECL Solution and its competitors.

Sample: Two-fold dilution of Hela cell lysate from 5 μg to 0.078 μg Primary antibody: Rabbit-anti Human HDAC-1 1:2000.
Secondary antibody: Goat anti-rabbit IgG HRP 1:20000.
Exposure time: 180 seconds.

Claro Mucho ECL Solution

Versatile substrate for a mid-femtogram detection level.
Minimal protocol optimization required.
The high sensitivity combined with a broad linear dynamic range for accurate quantification of both low and high abundance proteins in the same experiment. Extremely long signal duration.

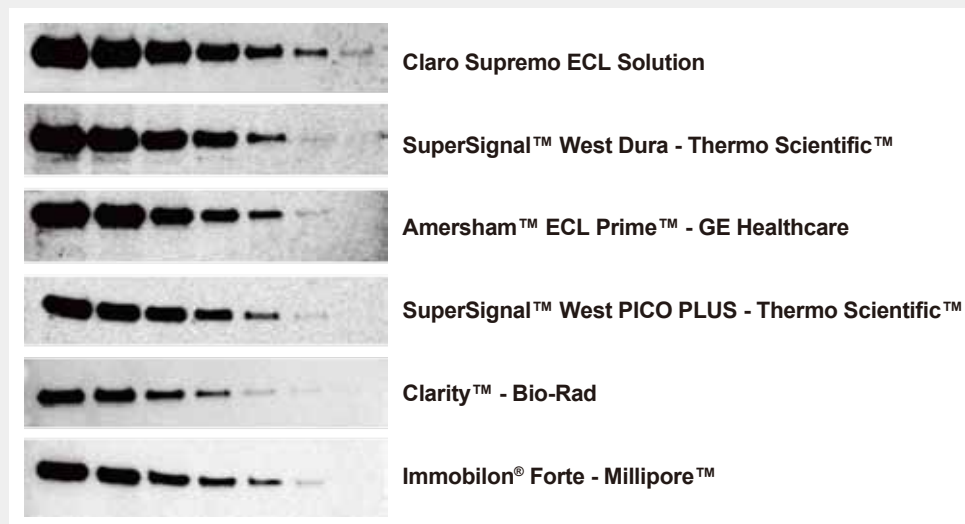


Western blotting detection of HDAC-1 on Hela cell lysate with Claro Mucho ECL Solution and its competitors.

Sample: Two-fold dilution of Hela cell lysate from 5 μg to 0.078 μg Primary antibody: Rabbit-anti Human HDAC-1 1:5000.
Secondary antibody: Goat anti-rabbit IgG HRP 1:75000.
Exposure time: 180 seconds.

Claro Supremo ECL Solution

Perfect choice for applications requiring very high sensitivity and extended signal duration. The strong signal in the presence of weak background, allows a high signal-to-noise ratio for mid to low femtogram detection level.

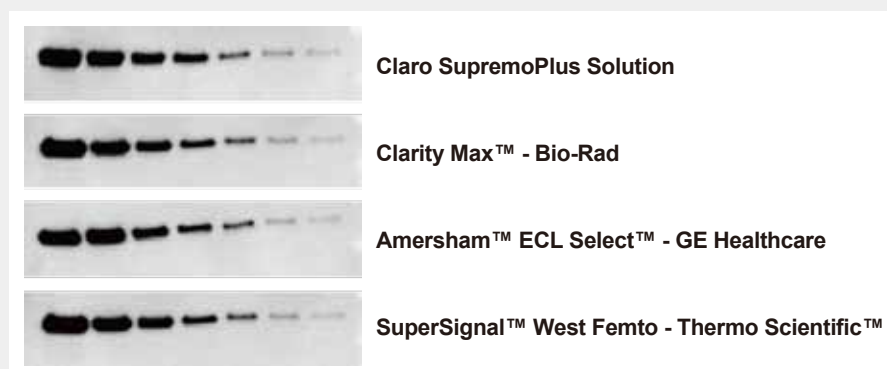


Western blotting detection of HDAC-1 on Hela cell lysate with Claro Supremo ECL Solution and its competitors

Sample: Two-fold dilution of Hela cell lysate from 5 μ g to 0.078 μ g Primary antibody: Rabbit-anti Human HDAC-1 1:7500.
Secondary antibody: Goat anti-rabbit IgG HRP 1:100000.

Claro SupremoPlus Solution

An ultra-sensitive substrate with low-femtogram detection level. The excellent signal intensity and sensitivity allow detecting limited amounts of proteins with fewer antibodies. Wide-linear dynamic range and ultra-high sensitivity are optimal for quantitative analysis.

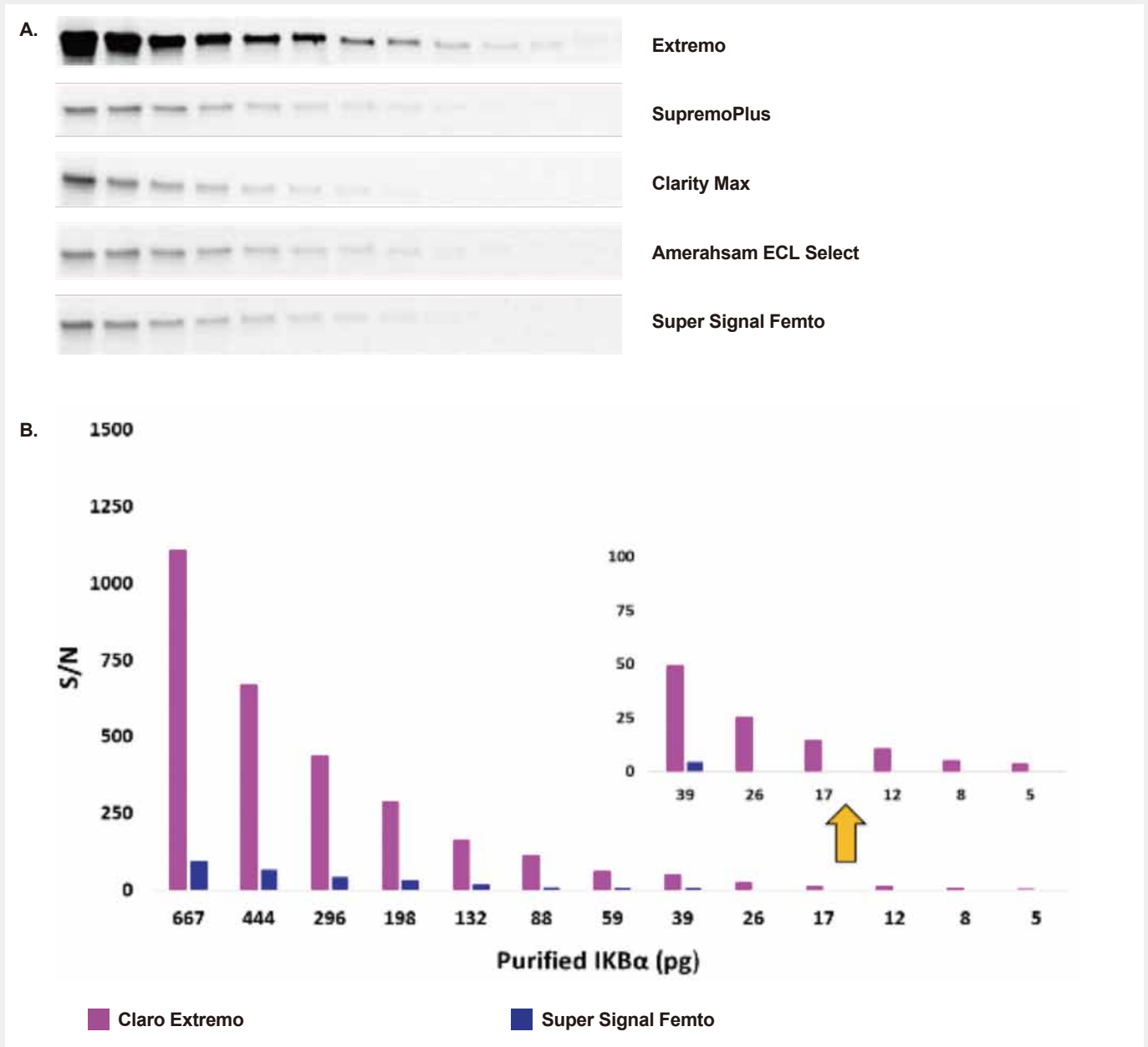


Western blotting detection of HDAC-1 on Hela cell lysate with Claro SupremoPlus Solution and its competitors.

Sample: Two-fold dilution of Hela cell lysate from 2.5 μ g to 0.039 μ g Primary antibody: Rabbit-anti Human HDAC-1 1:10000.
Secondary antibody: Goat anti-rabbit IgG HRP 1:300000. Exposure time: 120 seconds.

Claro Extremo ECL Solution

The most sensitive ECL substrate ever on the market.
 Extreme sensitivity and extraordinary light output allow detection of trace amounts of protein.
 Low background for extremely high signal-to-noise ratio.



Superior sensitivity of Claro Extremo

A) Purified IKBα 1,5-fold dilutions from 1000 to 5,1 pg Ab 1° Rabbit anti IKBα 1:1000 Ab 2° Goat anti rabbit 1:500000
 Exposure time: 10 seconds with ImageQuant LAS 4000 (GE Healthcare). B) Signal-to-noise ratio (S/N) analysis.
 The inset enlargement shows the enhanced sensitivity of Claro Extremo.