



iCell Bioscience Inc  
The World Cell Factory



# 2020 iCell Bioscience

Provide High-Quality Cells to Help Scientists Inspire and Change the World



Primary  
Cell



Cell  
Line



Cell  
Culture  
Media



CRO  
Service



Custom  
Cell  
Service

iCell Bioscience Inc, Shanghai

[www.icellbioscience.net](http://www.icellbioscience.net)

# COMPANY PROFILE

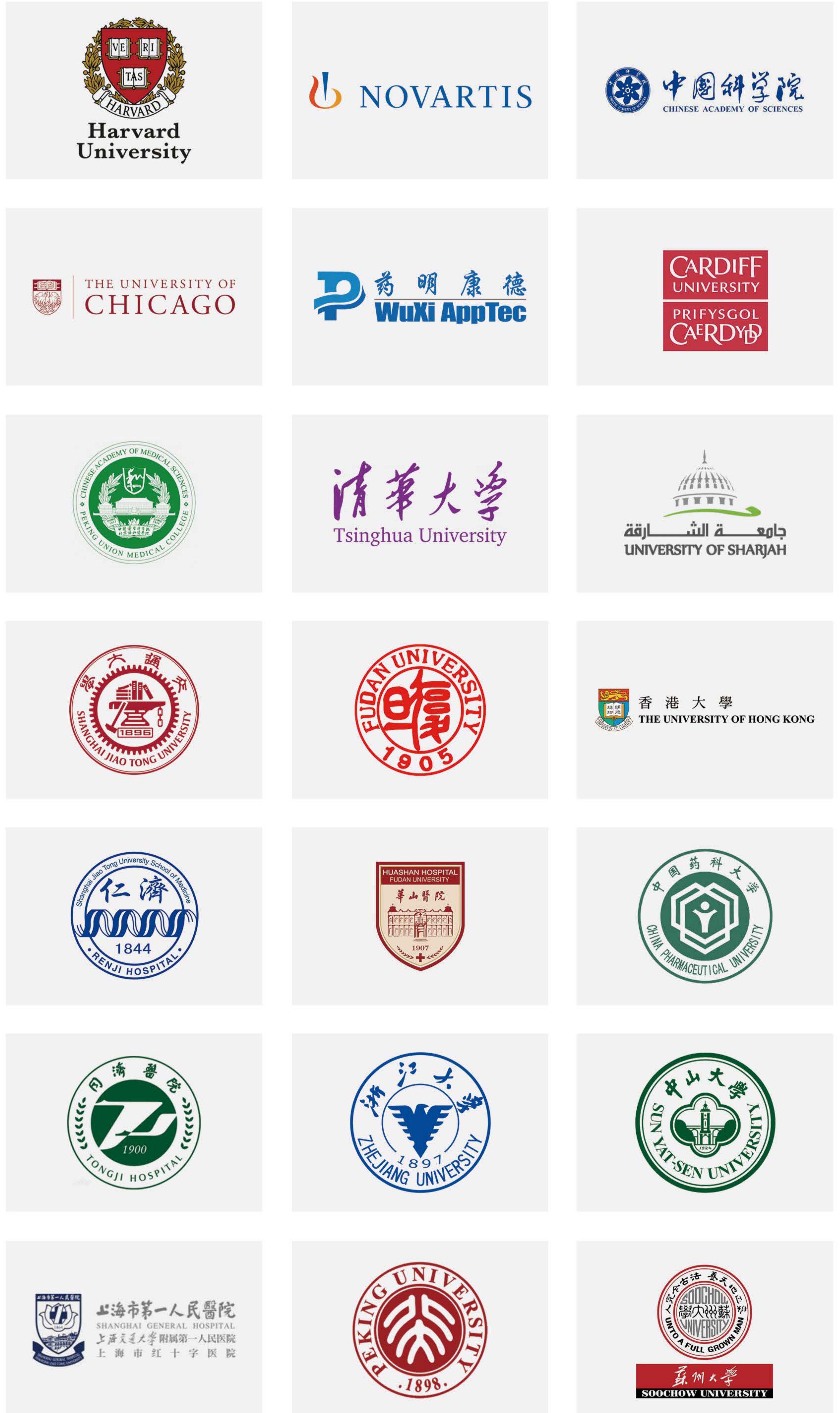
---



Since 2014, iCell has been a recognized premier global biological materials resource and standards organization focusing on acquisition, authentication, production and preservation of high-quality human and animal primary cells, cell lines and other cell biology products. iCell also provide CRO services and customized options to support your custom biological needs

iCell possesses the largest and most complete primary cell bank and cell line bank in China. We have isolated and purified more than 800 types of primary cells and possess more than 400 types of cell lines from a wide range of species. The total number of cells used for scientific research from our cell bank is more than 15,000 vials. Our cell biology products and custom services support life science and drug discovery and development. Over the years, iCell has become the leader in innovative research and development of primary cells and iPS cells in China. With the distinctive advantages of our original and creative technology in biological and biomedical field, iCell has established good collaborative relationships with more than 1,000 leading research institutions, universities, hospitals and pharmaceutical giants around the world until 2019.

# OUR CLIENTS



# WHY CHOOSE US (ICELL)

- 01** We can isolate and purify a variety of different types of primary cells for common experimental mammals (human, rat, mouse, rabbit). At present, we have isolated and purified more than 150 types of primary cells for each of these four species mentioned above.
- 02** We possess extensive experience in cell isolation for many types of primary cells with high level of difficulty on cell isolation (neural stem cells, intrahepatic bile duct epithelial cells, endothelial progenitor cells, etc.).
- 03** The Chinese largest, most diverse collection of standardized cells. We are the expert in culturing and authenticating primary cells and cell lines either by using standard production techniques or by developing specifically tailored protocols.
- 04** We provide optimized and ready-to-use cell culture media to ensure the optimal growth conditions of each type of primary cells.
- 05** We can provide custom primary cells for unusual laboratory model animals, such as Canine (dog), Porcine (pig), sheep, chicken, duck and many other animals.
- 06** We own extensive experience in primary cell immortalization.

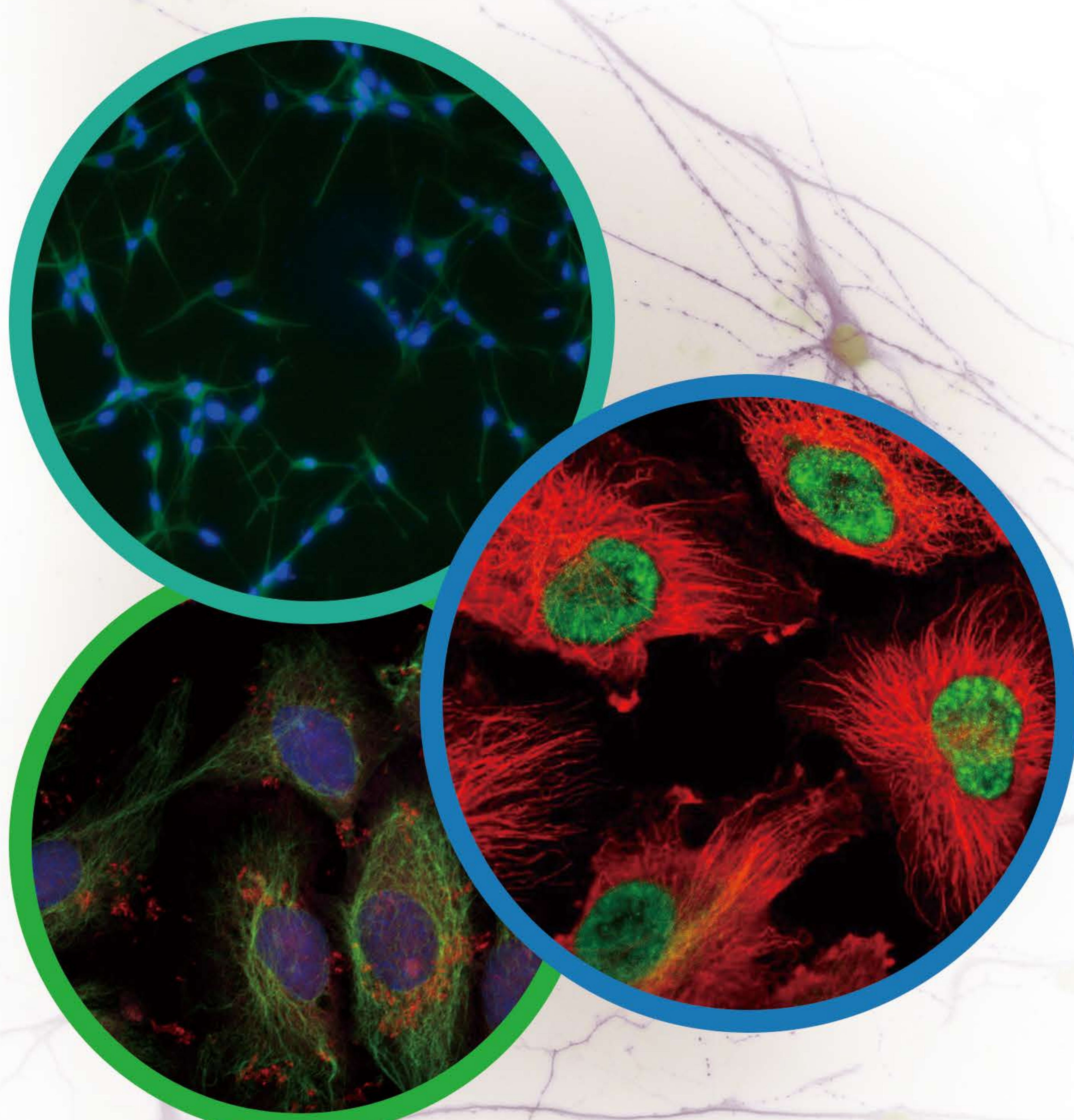
- 07** We maintain more than 400 types of cell lines, more than 800 types of primary cells and more than 15000 vials of frozen cells from a wide range of species.
- 08** We provide a variety of biological laboratory CRO research services.



# WHAT WE OFFER

## Primary Cells & Cell Lines

Cell Types	Cell Systems	Species
Astrocytes Cells	Respiratory system	Human
Cardiac Myocytes	Circulatory system	Mouse
Chondrocytes Cells	Digestive system	Rat
Endothelial Cells	Urinary system	Rabbit
Epithelial Cells	Endocrine system	Porcine
Fibroblasts Cells	Reproductive system	Sheep
Hair Cells	Bone, joint, muscle, skin, hair system	Duck
Keratinocytes Cells	Blood and immune system	*Custom
Corneal Cells	Eye, ear, nose, throat and oral system	Bovine
Macrophages Cells	Placenta and umbilical cord cells system	Canine
Melanocytes Cells	Brain and nervous system	Chicken
Meningeal Cells		Feline
Mesangial Cells		
Mesenchymal Stem Cells		
Microglia Cells		
Monoclear Cells		
Neural Stem Cells		
Neurous Cells		
Nucleaus Pulposus Cells		
Oligodendroeytes Cells		
Sertoli Cells		
Schuwan Cells		
Sketetal Muscle Cells		
Smooth Muscle Cells		
Stellate Cells		
Trophoblasts Cells		
Interstitial Cells		
Islet Cells		
Tumor Cells		
T Lymphocytes Cells		
B Lymphocytes Cells		
DC Cells		
Adipose Stem Cells		
Kidney Foot Cells		
Adrenocortical Cells		
Osteoclasts Cells		
Hematopoietic Stem Cells		
NK Cells		
Endothelial Progenitor Cells		
Periodontal Ligament Cells		
Spermatogonia Cells		
Preadipocyte Cells		
Parenchymal Cells		
Dental Pulp Stem Cells		



# WHAT WE OFFER

## Primary Cell Culture Media

Choosing an optimized media for primary cells is crucial for successful cell culture assays and related applications. The iCell primary cell culture media collection contains a broad range of cell culture media types, including the media for adherent cells (fibroblast, epithelial, endothelial) and suspension cells (NK cells, T cells). Moreover, we also provide a variety of stem cell culture media for neural stem cells and mesenchymal stem cells. iCell cell culture media collection adopts basal media, reduced-serum media, serum-free media and multiple recombinant growth factors to culture cell. We offer specific nutritional components required for each cell in the culture medium to ensure the nutritional requirements for cell growth and effectively reduce the growth rate of other cells.

## CRO Service

iCell Contract Research Organization Service mainly focuses on cell culture. We provide services such as culturing, proliferating and drug discovery of primary cells. We are also able to carry out further cell and molecular biology CRO services. We can establish animal models and carry out the subsequent test. Meanwhile, primary cells also can be isolated and purified from the established animal models, and then the subsequent assays can be performed. The specific assays of CRO service are as follows:

- **Cell Biology:**

Cell function, Cell viability, Cell transfection, Flow cytometry, Cell identification

- **Pathology:**

Section, Staining, Ultramicropathology

- **Molecular Biology:**

Western blot, Meristematic detection, Biochemical detection, Immunohistochemical detection, Tunel detection, Immunofluorescence detection, In situ hybridization detection, Confocal

- **Zoology:**

Animal imaging, Toxicology, Pharmacokinetic, Pharmacodynamic effect

## Custom Primary Cell Service

iCell provides custom primary cells with the specific requirements as follows:

- 1.A certain type of primary cells with specific surface markers, such as Navie T cells
- 2.A certain type of primary cells from experimental animals at a specific age or with specific disease model
- 3.A certain type of primary cells from some rare experimental model animals, such as Porcine (pig), Bovine, sheep, Canine (dog), chicken, duck, Feline etc.

## HOW TO ORDER

---

You can contact your local distributor to order (Please refer to our website). If there is no distributor in your area, please refer to the following steps.

1. Send your inquiries via e-mail or directly enquire us by phone
2. Send us the official order via e-mail
3. Sign the business contract
4. A proforma Invoice will be sent
5. Complete prepayment procedure
6. Shipment will be arranged (via FedEx) once your payment is received

## SHIPPING & STORAGE

---

After reaching consensus with our customers, we would select one of the following methods based on weather conditions and transport distance.

1. Frozen Cells: we will ship the cryovial of 1 ml frozen cell suspension in a foam incubator filled with dry ice. Please thaw cells as soon as they are received. If it is not possible to initiate cell culture immediately, frozen cells can be stored at  $-80^{\circ}\text{C}$  for 1 month.
2. Living Cells: we will ship living cells filled with complete culture media in T-25 cell culture flask at room temperature. Please observe cell growth under a microscope as soon as they are received, and subculture cells instantly when they are  $> 85\%$  confluent. For adherent cell type, if suspension cells continue to grow, please place the flask in the incubator for overnight stationary culture, which can help the living suspension cells to grow again and adhere to wall.

## PRODUCTS WARRANTY

---

Customers must notify iCell within a week of receiving goods to be eligible for a replacement. You can refer to our website to get the details of the After-Sales Service Notice.

## HOW TO ORDER

---

You can contact your local distributor to order (Please refer to our website). If there is no distributor in your area, please refer to the following steps.

1. Send your inquiries via e-mail or directly enquire us by phone
2. Send us the official order via e-mail
3. Sign the business contract
4. A proforma Invoice will be sent
5. Complete prepayment procedure
6. Shipment will be arranged (via FedEx) once your payment is received

## SHIPPING & STORAGE

---

After reaching consensus with our customers, we would select one of the following methods based on weather conditions and transport distance.

1. Frozen Cells: we will ship the cryovial of 1 ml frozen cell suspension in a foam incubator filled with dry ice. Please thaw cells as soon as they are received. If it is not possible to initiate cell culture immediately, frozen cells can be stored at  $-80^{\circ}\text{C}$  for 1 month.
2. Living Cells: we will ship living cells filled with complete culture media in T-25 cell culture flask at room temperature. Please observe cell growth under a microscope as soon as they are received, and subculture cells instantly when they are  $> 85\%$  confluent. For adherent cell type, if suspension cells continue to grow, please place the flask in the incubator for overnight stationary culture, which can help the living suspension cells to grow again and adhere to wall.

## PRODUCTS WARRANTY

---

Customers must notify iCell within a week of receiving goods to be eligible for a replacement. You can refer to our website to get the details of the After-Sales Service Notice.

# Appendix – Product List

## Primary Cells

Each unit contains >5 x 10<sup>5</sup> cells, packed in cryovial of 1ml cryopreserved cell suspension or T-25 flask of living cells.

a---Respiratory system  
c---Circulatory system  
d---Digestive system  
u---Urinary system

g---Endocrine system  
f---Reproductive system  
s---Bone, joint, muscle, skin, hair system  
i---Blood and immune system

m---Eye, ear, nose, throat and oral system  
e---Placenta and umbilical cord cells system  
n---Brain and nervous system

CAT. No.	Product Name
HUM-iCELL-a001	Human Primary Pulmonary Microvascular Endothelial Cells
HUM-iCELL-a002	Human Primary Type II Alveolar Epithelial Cells
HUM-iCELL-a003	Human Primary Tracheal Epithelial Cells
HUM-iCELL-a004	Human Primary Tracheal Smooth Muscle Cells
HUM-iCELL-a005	Human Primary Bronchial Epithelial Cells
HUM-iCELL-a006	Human Primary Bronchial Smooth Muscle Cells
HUM-iCELL-a007	Human Primary Pulmonary Fibroblasts Cells
HUM-iCELL-a008	Human Primary Pulmonary Artery Endothelial Cells
HUM-iCELL-a009	Human Primary Pulmonary Artery Smooth Muscle Cells
HUM-iCELL-c001	Human Primary Cardiac Muscle Cells
HUM-iCELL-c002	Human Primary Aortic Endothelial Cells
HUM-iCELL-c003	Human Primary Cardiac Fibroblasts Cells
HUM-iCELL-c004	Human Primary Myocardial Microvascular Endothelial Cells
HUM-iCELL-c005	Human Primary Aortic Valve Mesenchymal Cells
HUM-iCELL-c006	Human Primary Coronary Artery Endothelial Cells
HUM-iCELL-c007	Human Primary Coronary Artery Smooth Muscle Cells
HUM-iCELL-c008	Human Primary Carotid Artery Endothelial Cells
HUM-iCELL-c009	Human Primary Carotid Artery Smooth Muscle Cells
HUM-iCELL-d001	Human Primary Esophageal Epithelial Cells
HUM-iCELL-d002	Human Primary Esophageal Smooth Muscle Cells
HUM-iCELL-d003	Human Primary Esophageal Fibroblasts Cells
HUM-iCELL-d004	Human Primary Gastric Mucosal Epithelial Cells
HUM-iCELL-d005	Human Primary Gastric Smooth Muscle Cells
HUM-iCELL-d006	Human Primary Gastric Fibroblasts Cells
HUM-iCELL-d007	Human Primary Small Intestinal Mucosal Epithelial Cells
HUM-iCELL-d008	Human Primary Small Intestinal Smooth Muscle Cells
HUM-iCELL-d009	Human Primary Small Intestinal Fibroblasts Cells
HUM-iCELL-d010	Human Primary Colonic Mucosal Epithelial Cells
HUM-iCELL-d011	Human Primary Colon Smooth Muscle Cells
HUM-iCELL-d012	Human Primary Colon Fibroblasts Cells
HUM-iCELL-d013a	Human Primary Gallbladder Epithelial (Immortalized) Cells
HUM-iCELL-d013	Human Primary Gallbladder Epithelial Cells
HUM-iCELL-d014	Human Primary Intrahepatic Bile Duct Epithelial Cells
HUM-iCELL-d015	Human Primary Extrahepatic Bile Duct Epithelial Cells
HUM-iCELL-d016	Human Primary Hepatic Parenchymal Cells
HUM-iCELL-d017	Human Primary Hepatic Stellate Cells
HUM-iCELL-d018	Human Primary Sinusoidal Endothelial Cells
HUM-iCELL-d019	Human Primary Liver Kuffer Cells
HUM-iCELL-d020	Human Primary Rectal Fibroblasts Cells
HUM-iCELL-d021	Human Primary Liver Fibroblasts Cells
HUM-iCELL-d022	Human Primary Rectal Epithelial Cells
HUM-iCELL-d023	Human Primary Rectal Smooth Muscle Cells
HUM-iCELL-d024	Human Primary Gallbladder Microvascular Endothelial Cells
HUM-iCELL-d025	Human Primary Gallbladder Fibroblasts Cells
HUM-iCELL-d026	Human Primary Gallbladder Smooth Muscle Cells
HUM-iCELL-d027	Human Primary Gallbladder Arterial Endothelial Cells
HUM-iCELL-d028	Human Primary Esophageal Cancer Cells
HUM-iCELL-d029	Human Primary Esophageal Fibroblasts Cells
HUM-iCELL-u001	Human Primary Renal Tubular Epithelial Cells
HUM-iCELL-u002	Human Primary Glomerular Mesangial Cells
HUM-iCELL-u003	Human Primary Glomerular Endothelial Cells

CAT. No.	Product Name
HUM-iCELL-u004	Human Primary Kidney Foot Cells
HUM-iCELL-u005	Human Primary Ureteral Epithelial Cells
HUM-iCELL-u006	Human Primary Ureteral Smooth Muscle Cells
HUM-iCELL-u007	Human Primary Bladder Epithelial Cells
HUM-iCELL-u008	Human Primary Bladder Smooth Muscle Cells
HUM-iCELL-u009	Human Primary Bladder Fibroblasts Cells
HUM-iCELL-u010	Human Primary Prostatic Epithelial Cells
HUM-iCELL-u011	Human Primary Prostatic Fibroblasts Cells
HUM-iCELL-u012	Human Primary Fallopian Tube Fibroblasts Cells
HUM-iCELL-g001	Human Primary Thyroid Epithelial Cells
HUM-iCELL-g002	Human Primary Thyroid Fibroblasts Cells
HUM-iCELL-g003	Human Primary Pancreatic Stellate Cells
HUM-iCELL-g004	Human Primary Islet Cells
HUM-iCELL-g005	Human Primary Islet β Cells
HUM-iCELL-g006	Human Primary Adrenocortical Cells
HUM-iCELL-g007	Human Primary Adrenal Capsule Fibroblasts Cells
HUM-iCELL-g008	Human Primary Tonsil Arterial Endothelial Cells
HUM-iCELL-g009	Human Primary Tonsil Arterial Smooth Muscle Cells
HUM-iCELL-g010	Human Primary Parotid Tumor Cells
HUM-iCELL-g011	Human Primary Tonsil Interstitial Cells
HUM-iCELL-g012	Human Primary Submandibular Glandular Cells
HUM-iCELL-g013	Human Primary Thyroid Microvascular Endothelial Cells
HUM-iCELL-g014	Human Primary Tonsil Epithelial Cells
HUM-iCELL-g015	Human Primary Tonsil Vein Smooth Muscle Cells
HUM-iCELL-g016	Human Primary Tonsilla Fibroblasts Cells
HUM-iCELL-f001	Human Primary Interstitial Cells Of Ovary
HUM-iCELL-f002	Human Primary Oviduct Epithelial Cells
HUM-iCELL-f003	Human Primary Oviduct Smooth Muscle Cells
HUM-iCELL-f004	Human Primary Endometrial Epithelial Cells
HUM-iCELL-f005	Human Primary Uterine Smooth Muscle Cells
HUM-iCELL-f006	Human Primary Mammary Epithelial Cells
HUM-iCELL-f007	Human Primary Mammary Fibroblasts Cells
HUM-iCELL-f008	Human Primary Mammary Ductal Epithelial Cells
HUM-iCELL-f009	Human Primary Breast Tumor Cells
HUM-iCELL-f010	Human Primary Endometrial Stromal Cells
HUM-iCELL-f011	Human Primary Uterine Tumor Cells
HUM-iCELL-f012	Human Primary Breast Tumor Stem Cells
HUM-iCELL-f013	Human Primary Cervical Fibroblasts Cells
HUM-iCELL-f014	Human Primary Cervical Smooth Muscle Cells
HUM-iCELL-f015	Human Primary Ovarian Cyst Cells
HUM-iCELL-f016	Human Primary Cervical Epithelial Cells
HUM-iCELL-f017	Human Primary Spermatogonia Cells
HUM-iCELL-f018	Human Primary Testicular Albuginea Epithelial Cells
HUM-iCELL-f019	Human Primary Testicular Albuginea Fibroblasts Cells
HUM-iCELL-f020	Human Primary Vas Deferens Smooth Muscle Cells
HUM-iCELL-f021	Human Primary Epididymal Smooth Muscle Cells
HUM-iCELL-f022	Human Primary Epididymal Epithelial Cells
HUM-iCELL-f023	Human Primary Epididymal Fibroblasts Cells
HUM-iCELL-f024	Human Primary Cervical Cancer Cells
HUM-iCELL-f025	Human Primary Sertoli Cells
HUM-iCELL-f026	Human Primary Uterine Fibroblasts Cells

CAT. No.	Product Name
HUM-iCELL-s001	Human Primary Dermal Fibroblasts Cells
HUM-iCELL-s002	Human Primary Keratinocytes Cells
HUM-iCELL-s003	Human Primary Preadipocyte Cells
HUM-iCELL-s004	Human Primary Adipose Microvascular Endothelial Cells
HUM-iCELL-s005	Human Primary Dermal Papilla Cells
HUM-iCELL-s006	Human Primary Outer Root Sheath Cells
HUM-iCELL-s007	Human Primary Hair Follicular Keratinocytes Cells
HUM-iCELL-s008	Human Primary Skeletal Muscle Cells
HUM-iCELL-s009	Human Primary Ligament Fibroblasts Cells
HUM-iCELL-s010RA	Human Primary Rheumatoid Arthritis Synovial Fibroblasts Cells
HUM-iCELL-s010	Human Primary Synovial Fibroblasts Cells
HUM-iCELL-s011	Human Primary Bone Marrow Mesenchymal Stem Cells
HUM-iCELL-s012	Human Primary Nucleus Pulposus Cells
HUM-iCELL-s013	Human Primary Melanoma Cells
HUM-iCELL-s014	Human Primary Caudal Tumor Cells
HUM-iCELL-s015	Human Primary Hair Follicle Fibroblasts Cells
HUM-iCELL-s016	Human Primary Melanocytes Cells
HUM-iCELL-s017	Human Primary Adipose Stem Cells
HUM-iCELL-s018	Human Primary Chondrocytes Cells
HUM-iCELL-s019	Human Primary Osteoclasts Cells
HUM-iCELL-i001	Human Primary B Lymphocytes Cells
HUM-iCELL-i002	Human Primary T Lymphocytes Cells
HUM-iCELL-i002Nai	Human primary Naive T cells
HUM-iCELL-i003	Human Primary Mononuclear Cells
HUM-iCELL-i004	Human Primary DC Cells
HUM-iCELL-i005	Human Primary Hematopoietic Stem Cells
HUM-iCELL-i006	Human Primary NK Cells
HUM-iCELL-i007	Human Primary Endothelial Progenitor Cells
HUM-iCELL-i008	Human Primary Lymphatic Endothelial Cells
HUM-iCELL-i009	Human Primary Lymphatic Vessel Fibroblasts Cells
HUM-iCELL-i010	Human Primary Peripheral Blood Mononuclear Cells
HUM-iCELL-i011	Human Primary Splenic Stellate Cells
HUM-iCELL-i012	Human Primary Spleen Peripheral Blood Mononuclear Cells
HUM-iCELL-i013	Human Primary Spleen Fibroblasts Cells
HUM-iCELL-i014	Human Primary Splenocyte Smooth Muscle Cells
HUM-iCELL-i015	Human Primary Bone Marrow Macrophage Cells
HUM-iCELL-m001	Human Primary Periodontal Ligament Fibroblasts Cells
HUM-iCELL-m002	Human Primary Periodontal Ligament Stem Cells
HUM-iCELL-m003	Human Primary Dental Pulp Stem Cells
HUM-iCELL-m004	Human Primary Oral Mucosal Epithelial Cells
HUM-iCELL-m005	Human Primary Gingival Fibroblasts Cells
HUM-iCELL-m006	Human Primary Corneal Epithelial Cells
HUM-iCELL-m007	Human Primary Lens Epithelial Cells
HUM-iCELL-m008	Human Primary Choroidal Microvascular Endothelial Cells
HUM-iCELL-m009	Human Primary Corneal Endothelial Cells
HUM-iCELL-m010	Human Primary Tongue Epithelial Cells
HUM-iCELL-m011	Human Primary Retinal Pigment Epithelial Cells
HUM-iCELL-m012	Human Primary Choroidal Fibroblasts Cells
HUM-iCELL-m013	Human Primary Retinal Muller Cells
HUM-iCELL-m014	Human Primary Retinal Microvascular Endothelial Cells
HUM-iCELL-e001	Human Primary Placental Microvascular Endothelial Cells
HUM-iCELL-e002	Human Primary Amniotic Epithelial Cells
HUM-iCELL-e003	Human Primary Placental Chorionic Trophoblastic Cells
HUM-iCELL-e004	Human Primary Placental Mesenchymal Stem Cells
HUM-iCELL-e005	Human Primary Umbilical Vein Endothelial Cells
HUM-iCELL-e006	Human Primary Umbilical Artery Endothelial Cells
HUM-iCELL-e007	Human Primary Umbilical Vein Smooth Muscle Cells
HUM-iCELL-e008	Human Primary Umbilical Artery Smooth Muscle Cells
HUM-iCELL-e009	Human Primary Umbilical Cord Mesenchymal Stem Cells
HUM-iCELL-e010	Human Primary Cord Blood DC Cells
HUM-iCELL-n001	Human Primary Cerebral Microvascular Endothelial Cells
HUM-iCELL-n002	Human Primary Meningeal Cells
HUM-iCELL-n003	Human Primary Astrocyte Cells
HUM-iCELL-n004	Human Primary Oligodendrocytes Cells
HUM-iCELL-n005	Human Primary Neural Stem Cells
HUM-iCELL-n006	Human Primary Cortical Neuron Cells
HUM-iCELL-n007	Human Primary Microglia Cells
HUM-iCELL-n008	Human Primary Schwann Cells
HUM-iCELL-n009	Human Primary Neuroglia Cells
RAT/MIC/RAB/PIG-iCELL-a001	Rat/Mouse/Rabbit/Pig Primary Pulmonary Microvascular Endothelial Cells
RAT/MIC/RAB-iCELL-a002	Rat/Mouse/Rabbit Primary Pulmonary Artery Endothelial Cells
RAT/MIC/RAB-iCELL-a003	Rat/Mouse/Rabbit Primary Pulmonary Artery Smooth Muscle Cells
RAT/MIC/RAB-iCELL-a004	Rat/Mouse/Rabbit Primary Pulmonary Artery Adventitial Fibroblasts Cells
RAT/MIC/RAB-iCELL-a005	Rat/Mouse/Rabbit Primary II Alveolar Epithelial Cells
RAT/MIC/RAB-iCELL-a006	Rat/Mouse/Rabbit Primary Tracheal Epithelial Cells
RAT/MIC/RAB-iCELL-a007	Rat/Mouse/Rabbit Primary Tracheal Smooth Muscle Cells

CAT. No.	Product Name
RAT/MIC/RAB-iCELL-a008	Rat/Mouse/Rabbit Primary Bronchial Epithelial Cells
RAT/MIC/RAB-iCELL-a009	Rat/Mouse/Rabbit Primary Bronchial Smooth Muscle Cells
RAT/MIC/RAB-iCELL-a010	Rat/Mouse/Rabbit Primary Pulmonary Fibroblasts Cells
RAT/MIC/RAB-iCELL-a011	Rat/Mouse/Rabbit Primary Pulmonary Macrophages Cells
RAT/MIC/RAB-iCELL-a012	Rat/Mouse/Rabbit Primary Pulmonary Microvascular Pericytes
RAT/MIC/RAB-iCELL-c001	Rat/Mouse/Rabbit Primary Cardiac Muscle Cells
RAT/MIC/RAB-iCELL-c002	Rat/Mouse/Rabbit Primary Cardiac Fibroblasts Cells
RAT/MIC/RAB-iCELL-c003	Rat/Mouse/Rabbit Primary Aortic Endothelial Cells
RAT/MIC/RAB-iCELL-c004	Rat/Mouse/Rabbit Primary Aortic Smooth Muscle Cells
RAT/MIC/RAB-iCELL-c005	Rat/Mouse/Rabbit Primary Aortic Adventitial Fibroblasts Cells
RAT/MIC/RAB-iCELL-c006	Rat/Mouse/Rabbit Primary Coronary Endothelial Cells
RAT/MIC/RAB-iCELL-c007	Rat/Mouse/Rabbit Primary Coronary Smooth Muscle Cells
RAT/MIC/RAB-iCELL-c008	Rat/Mouse/Rabbit Primary Carotid Endothelial Cells
RAT/MIC/RAB-iCELL-c009	Rat/Mouse/Rabbit Primary Carotid Smooth Muscle Cells
RAT/MIC/RAB-iCELL-c010	Rat/Mouse/Rabbit Primary Abdominal Aortic Endothelial Cells
RAT/MIC/RAB-iCELL-c011	Rat/Mouse/Rabbit Primary Abdominal Aortic Smooth Muscle Cells
RAT/MIC/RAB-iCELL-c012	Rat/Mouse/Rabbit Primary Abdominal Aortic Adventitial Fibroblasts Cells
RAT/MIC/RAB-iCELL-c013	Rat/Mouse/Rabbit Primary Femoral Artery Endothelial Cells
RAT/MIC/RAB-iCELL-c014	Rat/Mouse/Rabbit Primary Femoral Artery Smooth Muscle Cells
RAT/MIC/RAB-iCELL-c015	Rat/Mouse/Rabbit Primary Cardiac Stem Cells
RAT/MIC/RAB-iCELL-c016	Rat/Mouse/Rabbit Primary Aortic Arch Smooth Muscle Cells
RAT/MIC/RAB-iCELL-c017	Rat/Mouse/Rabbit Primary Aortic Arch Endothelial Cells
RAT/MIC/RAB-iCELL-c018	Rat/Mouse/Rabbit Primary Cardiac Microvascular Endothelial Cells
RAT/MIC/RAB-iCELL-c019	Rat/Mouse/Rabbit Primary Carotid Fibroblasts Cells
RAT/MIC/RAB-iCELL-c020	Rat/Mouse/Rabbit Primary Jugular Endothelial Cells
RAT/MIC/RAB/PIG-iCELL-c021	Rat/Mouse/Rabbit/Pig Primary Aortic Valve Interstitial Cells
RAT/MIC/RAB-iCELL-d001	Rat/Mouse/Rabbit Primary Esophageal Epithelial Cells
RAT/MIC/RAB-iCELL-d002	Rat/Mouse/Rabbit Primary Esophageal Smooth Muscle Cells
RAT/MIC/RAB-iCELL-d003	Rat/Mouse/Rabbit Primary Esophageal Fibroblasts Cells
RAT/MIC/RAB-iCELL-d004	Rat/Mouse/Rabbit Primary Gastric Mucosal Epithelial Cells
RAT/MIC/RAB-iCELL-d005	Rat/Mouse/Rabbit Primary Gastric Smooth Muscle Cells
RAT/MIC/RAB-iCELL-d006	Rat/Mouse/Rabbit Primary Gastric Fibroblasts Cells
RAT/MIC/RAB-iCELL-d007	Rat/Mouse/Rabbit Primary Small Intestinal Mucosal Epithelial Cells
RAT/MIC/RAB-iCELL-d008	Rat/Mouse/Rabbit Primary Small Intestinal Smooth Muscle Cells
RAT/MIC/RAB-iCELL-d009	Rat/Mouse/Rabbit Primary Small Intestine Crypt Epithelial Cells
RAT/MIC/RAB-iCELL-d010	Rat/Mouse/Rabbit Primary Small Intestinal Fibroblasts Cells
RAT/MIC/RAB-iCELL-d011	Rat/Mouse/Rabbit Primary Colonic Mucosal Epithelial Cells
RAT/MIC/RAB-iCELL-d012	Rat/Mouse/Rabbit Primary Colon Smooth Muscle Cells
RAT/MIC/RAB-iCELL-d013	Rat/Mouse/Rabbit Primary Colon Fibroblasts Cells
RAT/MIC/RAB-iCELL-d014	Rat/Mouse/Rabbit Primary Gallbladder Epithelial Cells
RAT/MIC/RAB-iCELL-d015	Rat/Mouse/Rabbit Primary Intrahepatic Bile Duct Epithelial Cells
RAT/MIC/RAB-iCELL-d016	Rat/Mouse/Rabbit Primary Extrahepatic Bile Duct Epithelial Cells
RAT/MIC/RAB-iCELL-d017	Rat/Mouse/Rabbit Primary Hepatic Parenchymal Cells
RAT/MIC/RAB-iCELL-d018	Rat/Mouse/Rabbit Primary Hepatic Stellate Cells
RAT/MIC/RAB-iCELL-d019	Rat/Mouse/Rabbit Primary Sinusoidal Endothelial Cells
RAT/MIC/RAB-iCELL-d020	Rat/Mouse/Rabbit Primary Liver Kuffer Cells
RAT/MIC/RAB-iCELL-d021	Rat/Mouse/Rabbit Primary Colonic Neuronal Cells
RAT/MIC/RAB/DUC-iCELL-d022	Rat/Mouse/Rabbit/Duck Primary Hepatic Stromal Cells
RAT/MIC/RAB-iCELL-d023	Rat/Mouse/Rabbit Primary Hepatic Fibroblasts Cells
RAT/MIC/RAB-iCELL-d024	Rat/Mouse/Rabbit Primary Intestinal Interstitial Cells
RAT/MIC/RAB-iCELL-u001	Rat/Mouse/Rabbit Primary Renal Tubular Epithelial Cells
RAT/MIC/RAB-iCELL-u002	Rat/Mouse/Rabbit Primary Glomerular Mesangial Cells
RAT/MIC/RAB-iCELL-u003	Rat/Mouse/Rabbit Primary Glomerular Endothelial Cells
RAT/MIC/RAB-iCELL-u004	Rat/Mouse/Rabbit Primary Renal Podocytes Cells
RAT/MIC/RAB-iCELL-u005	Rat/Mouse/Rabbit Primary Ureteral Epithelial Cells
RAT/MIC/RAB-iCELL-u006	Rat/Mouse/Rabbit Primary Ureteral Smooth Muscle Cells
RAT/MIC/RAB/PIG-iCELL-u007	Rat/Mouse/Rabbit/Pig Primary Bladder Epithelial Cells
RAT/MIC/RAB/PIG-iCELL-u008	Rat/Mouse/Rabbit/Pig Primary Bladder Smooth Muscle Cells
RAT/MIC/RAB-iCELL-u009	Rat/Mouse/Rabbit Primary Bladder Stromal Fibroblasts Cells
RAT/MIC/RAB-iCELL-u010	Rat/Mouse/Rabbit Primary Prostate Epithelial Cells
RAT/MIC/RAB/PIG-iCELL-u011	Rat/Mouse/Rabbit/Pig Primary Prostate Fibroblasts Cells
RAT/MIC/RAB-iCELL-u012	Rat/Mouse/Rabbit Primary Renal Pericytes Cells
RAT/MIC/RAB/PIG-iCELL-g001	Rat/Mouse/Rabbit/Pig Primary Thyroid Epithelial Cells
RAT/MIC/RAB-iCELL-g002	Rat/Mouse/Rabbit Primary Thyroid Fibroblasts Cells
RAT/MIC/RAB-iCELL-g003	Rat/Mouse/Rabbit Primary Pancreatic Stellate Cells
RAT/MIC/RAB-iCELL-g004	Rat/Mouse/Rabbit Primary Islet cells
RAT/MIC/RAB-iCELL-g005	Rat/Mouse/Rabbit Primary Islet Beta Cells
RAT/MIC/RAB/PIG-iCELL-g006	Rat/Mouse/Rabbit/Pig Primary Pituitary Cells
RAT/MIC/RAB-iCELL-g007	Rat/Mouse/Rabbit Primary Thymocytes Cells
RAT/MIC/RAB-iCELL-g008	Rat/Mouse/Rabbit Primary Thymic Stromal Cells
RAT/MIC/RAB-iCELL-g009	Rat/Mouse/Rabbit Primary Submandibular Gland Epithelial Cells
RAT/MIC/RAB-iCELL-g010	Rat/Mouse/Rabbit Primary Renal Epithelial Glial Cells
RAT/MIC/RAB/PIG-iCELL-g011	Rat/Mouse/Rabbit/Pig Primary Adrenal Medulla Cells
RAT/MIC/RAB-iCELL-f001	Rat/Mouse/Rabbit Primary Sperm Cells
RAT/MIC/RAB/PIG-iCELL-f002	Rat/Mouse/Rabbit/Pig Primary Sertoli Cells
RAT/MIC/RAB-iCELL-f003	Rat/Mouse/Rabbit Primary Cavernous Smooth Muscle Cells

CAT. No.	Product Name
RAT/MIC/RAB/PIG-iCELL-f004	Rat/Mouse/Rabbit/Pig Primary Ovarian Granulosa Cells
RAT/MIC/RAB-iCELL-f005	Rat/Mouse/Rabbit Primary Ovarian Stromal Cells
RAT/MIC/RAB-iCELL-f006	Rat/Mouse/Rabbit Primary Oviduct Epithelial Cells
RAT/MIC/RAB-iCELL-f007	Rat/Mouse/Rabbit Primary Oviduct Smooth Muscle Cells
RAT/MIC/RAB-iCELL-f008	Rat/Mouse/Rabbit Primary Endometrial Epithelial Cells
RAT/MIC/RAB-iCELL-f009	Rat/Mouse/Rabbit Primary Endometrial Smooth Muscle cells
RAT/MIC/RAB-iCELL-f010	Rat/Mouse/Rabbit Primary Ovarian Surface Epithelial Cells
RAT/MIC/RAB/PIG-iCELL-f011	Rat/Mouse/Rabbit/Pig Primary Mammary Epithelial Cells
RAT/MIC/RAB/PIG-iCELL-f012	Rat/Mouse/Rabbit/Pig Primary Mammary Fibroblasts Cells
RAT/MIC/RAB/PIG-iCELL-f013	Rat/Mouse/Rabbit/Pig Primary Ovarian Endometrial Cells
RAT/MIC/RAB-iCELL-f014	Rat/Mouse/Rabbit Primary Endometrial Stromal Cells
RAT/MIC/RAB/SHE-iCELL-f015	Rat/Mouse/Rabbit/Sheep Primary Testicular Interstitial Cells
RAT/MIC/RAB-iCELL-f016	Rat/Mouse/Rabbit Primary Uterine Fibroblasts Cells
RAT/MIC/RAB-iCELL-s001	Rat/Mouse/Rabbit Primary Bone Cells
RAT/MIC/RAB-iCELL-s002	Rat/Mouse/Rabbit Primary Osteoblasts Cells
RAT/MIC/RAB-iCELL-s003	Rat/Mouse/Rabbit Primary Chondrocytes Cells
RAT/MIC/RAB-iCELL-s004	Rat/Mouse/Rabbit Primary Synovial Fibroblasts Cells
RAT/MIC/RAB-iCELL-s005	Rat/Mouse/Rabbit Primary Skeletal Muscle Cells
RAT/MIC/RAB-iCELL-s006	Rat/Mouse/Rabbit Primary Skeletal Muscle Fibroblasts Cells
RAT/MIC/RAB-iCELL-s007	Rat/Mouse/Rabbit Primary Fibrous Ring Cells
RAT/MIC/RAB-iCELL-s008	Rat/Mouse/Rabbit Primary Nucleus Pulposus Cells
RAT/MIC/RAB-iCELL-s009	Rat/Mouse/Rabbit Primary Osteoclasts Cells
RAT/MIC/RAB-iCELL-s010	Rat/Mouse/Rabbit Primary Skin Fibroblasts Cells
RAT/MIC/RAB-iCELL-s011	Rat/Mouse/Rabbit Primary Keratinocytes Cells
RAT/MIC/RAB-iCELL-s012	Rat/Mouse/Rabbit Primary Epidermal Stem Cells
RAT/MIC/RAB-iCELL-s013	Rat/Mouse/Rabbit Primary Preadipocyte Cells
RAT/MIC/RAB-iCELL-s014	Rat/Mouse/Rabbit Primary Adipose Microvascular Endothelial Cells
RAT/MIC/RAB-iCELL-s015	Rat/Mouse/Rabbit Primary Dermal Papilla Cells
RAT/MIC/RAB-iCELL-s016	Rat/Mouse/Rabbit Primary Outer Root Sheath Cells
RAT/MIC/RAB-iCELL-s017	Rat/Mouse/Rabbit Primary Hair Follicular Keratinocytes Cells
RAT/MIC/RAB-iCELL-s018	Rat/Mouse/Rabbit Primary Bone Marrow Mesenchymal Stem Cells
RAT/MIC/RAB-iCELL-s019	Rat/Mouse/Rabbit Primary Adipose Stem Cells
RAT/MIC/RAB-iCELL-s020	Rat/Mouse/Rabbit Primary Synovial Mesenchymal Stem Cells
RAT/MIC/RAB-iCELL-i001	Rat/Mouse/Rabbit Primary B Lymphocytes Cells
RAT/MIC/RAB-iCELL-i002	Rat/Mouse/Rabbit Primary T Lymphocytes Cells
RAT/MIC/RAB-iCELL-i003	Rat/Mouse/Rabbit Primary Mononuclear Cells
RAT/MIC/RAB-iCELL-i004	Rat/Mouse/Rabbit Primary DC Cells
RAT/MIC/RAB-iCELL-i005	Rat/Mouse/Rabbit Primary Hematopoietic Stem Cells
RAT/MIC/RAB-iCELL-i006	Rat/Mouse/Rabbit Primary NK Cells
RAT/MIC/RAB-iCELL-i007	Rat/Mouse/Rabbit Primary Endothelial Progenitor Cells
RAT/MIC/RAB-iCELL-i008	Rat/Mouse/Rabbit Primary Thymic Epithelial Cells
RAT/MIC/RAB-iCELL-i009	Rat/Mouse/Rabbit Primary Thymic Fibroblasts Cells
RAT/MIC/RAB-iCELL-i010	Rat/Mouse/Rabbit Primary Spleen Stromal Cells
RAT/MIC/RAB-iCELL-i011	Rat/Mouse/Rabbit Primary Spleen-derived Endothelial Progenitor Cells
RAT/MIC/RAB-iCELL-i012	Rat/Mouse/Rabbit Primary Lymphatic Endothelial Cells
RAT/MIC/RAB-iCELL-i013	Rat/Mouse/Rabbit Primary Lymphatic Fibroblasts Cells
RAT/MIC/RAB-iCELL-i014	Rat/Mouse/Rabbit Primary Bone Marrow Mast Cells
RAT/MIC/RAB-iCELL-i015	Rat/Mouse/Rabbit Primary Bone Marrow Mononuclear Cells
RAT/MIC/RAB-iCELL-i016	Rat/Mouse/Rabbit Primary Spleen Lymphocytes Cells
RAT/MIC/RAB-iCELL-i017	Rat/Mouse/Rabbit Primary Bone Marrow Macrophages Cell
RAT/MIC/RAB-iCELL-n001	Rat/Mouse/Rabbit Primary Cerebral Microvascular Endothelial Cells
RAT/MIC/RAB-iCELL-n002	Rat/Mouse/Rabbit Primary Cerebral Artery Endothelial Cells
RAT/MIC/RAB-iCELL-n003	Rat/Mouse/Rabbit Primary Cerebrovascular Cells
RAT/MIC/RAB-iCELL-n004	Rat/Mouse/Rabbit Primary Meningeal Cells
RAT/MIC/RAB-iCELL-n005	Rat/Mouse/Rabbit Primary Cerebral Cortical Neuron Cells
RAT/MIC/RAB-iCELL-n006	Rat/Mouse/Rabbit Primary Hippocampal Neuron Cells
RAT/MIC/RAB-iCELL-n007	Rat/Mouse/Rabbit Primary Spinal Neuron Cells
RAT/MIC/RAB-iCELL-n008	Rat/Mouse/Rabbit Primary Schwann Cells
RAT/MIC/RAB-iCELL-n009	Rat/Mouse/Rabbit Primary Astrocyte Cells
RAT/MIC/RAB-iCELL-n010	Rat/Mouse/Rabbit Primary Microglia Cells
RAT/MIC/RAB-iCELL-n011	Rat/Mouse/Rabbit Primary Oligodendrocyte Cells
RAT/MIC/RAB-iCELL-n012	Rat/Mouse/Rabbit Primary Neuroglia Cells
RAT/MIC/RAB-iCELL-n013	Rat/Mouse/Rabbit Primary Cerebral Artery Smooth Muscle Cells
RAT/MIC/RAB-iCELL-n014	Rat/Mouse/Rabbit Primary Cerebral Cortical Neural Stem Cells
RAT/MIC/RAB-iCELL-n015	Rat/Mouse/Rabbit Primary Cerebrovascular Fibroblasts Cells
RAT/MIC/RAB-iCELL-n016	Rat/Mouse/Rabbit Primary DRG Neuronal Cells
RAT/MIC/RAB-iCELL-n017	Rat/Mouse/Rabbit Primary Hypothalamic Neuron Cells
RAT/MIC/RAB-iCELL-m001	Rat/Mouse/Rabbit Primary Corneal Epithelial Cells
RAT/MIC/RAB-iCELL-m002	Rat/Mouse/Rabbit Primary Corneal Stromal Cells
RAT/MIC/RAB-iCELL-m003	Rat/Mouse/Rabbit Primary Retinal Pigment Epithelial Cells
RAT/MIC/RAB-iCELL-m004	Rat/Mouse/Rabbit Primary Lens Epithelial Cells
RAT/MIC/RAB-iCELL-m005	Rat/Mouse/Rabbit Primary Conjunctival Fibroblasts Cells
RAT/MIC/RAB-iCELL-m006	Rat/Mouse/Rabbit Primary Conjunctival Epithelial Cells
RAT/MIC/RAB-iCELL-m007	Rat/Mouse/Rabbit Primary Choroidal Microvascular Endothelial Cells
RAT/MIC/RAB-iCELL-m008	Rat/Mouse/Rabbit Primary Choroidal Fibroblasts Cells
RAT/MIC/RAB-iCELL-m009	Rat/Mouse/Rabbit Primary Retinal Microvascular Endothelial Cells

CAT. No.	Product Name
RAT/MIC/RAB-iCELL-m010	Rat/Mouse/Rabbit Primary Periodontal Ligament Fibroblasts Cells
RAT/MIC/RAB-iCELL-m011	Rat/Mouse/Rabbit Primary Periodontal Ligament Stem Cells
RAT/MIC/RAB-iCELL-m012	Rat/Mouse/Rabbit Primary Dental Pulp Stem Cells
RAT/MIC/RAB-iCELL-m013	Rat/Mouse/Rabbit Primary Oral Mucosal Epithelial Cells
RAT/MIC/RAB-iCELL-m014	Rat/Mouse/Rabbit Primary Tongue Epidermal Cells
RAT/MIC/RAB-iCELL-m015	Rat/Mouse/Rabbit Primary Tympanic Epithelial Stem Cells
RAT/MIC/RAB-iCELL-m016	Rat/Mouse/Rabbit Primary Corneal Endothelial Cells
RAT/MIC/RAB-iCELL-m017	Rat/Mouse/Rabbit Primary Scleral Epithelial Cells
RAT/MIC/RAB-iCELL-m018	Rat/Mouse/Rabbit Primary Retinal Muller Cells
RAT/MIC/RAB-iCELL-e001	Rat/Mouse/Rabbit Primary Placental Mesenchymal Stem Cells
RAT/MIC/RAB-iCELL-e002	Rat/Mouse/Rabbit Primary Embryonic Fibroblasts Cells

## Other Cells

CAT. No.	Product Name	Abbreviation
iCell-m067	Mouse Breast Cancer Cell,4T1	4T1
iCell-m068	Mouse Breast Cancer Cell+LUC,4T1+luc	4T1+luc
icell-0049a	Rat Fat Stem Cells+RFP	Primary Cells+RFP
iCell-0018b	Immortalized Goat Mammary Epithelial Cells	
icell-001a	Immortalized Human Gallbladder Epithelial Cells	
icell-004a	Immortalized Human Gallbladder Epithelial Cells+GFP	
iCell-h0018a	Human Lung Cancer Cells+RFP	A549+RFP
iCell-h011a	Human Lung Cancer Cells+Luc	A549+Luc
iCell-h244	Human Astrogloma Temozolomide Resistant Cells+LUC	U251 MG/TMZ+LUC(3000)
iCell-0021a	Human Astrocytoma Cells,U87MG+RFP	U87MG+RFP
iCell-0050a	Human Primary Umbilical Vein Endothelial Cells+GFP	Primary Cells+GFP
iCell-h111	Immortalized Human Umbilical Vein Endothelial Cells+RFP	HUVEC+RFP
iCell-0022a	Immortalized Human Umbilical Vein Endothelial Cells+GFP	HUVEC+GFP
iCell-0045a	Human Umbilical Vein Endothelial Cells,HUV-EC-C	HUV-EC-C
iCell-0052a	Immortalized Human Vestibular Schwannoma cells	
iCell-h130	Human Breast Cancer Cell+LUC,MCF-7+Luc	MCF-7+Luc
iCell-h187a	Human Neuroblastoma Cells,SHSY5Y (mutant type)	sh-sy5y transfection(mutant type)
iCell-h187b	Human Neuroblastoma Cells,SHSY5Y (wild type)	sh-sy5y transfection(wild type)
iCell-0053a	Immortalized Human Pancreatic Neuroendocrine Tumor Cells	
iCell-003a	Immortalized Human pancreatic cancer cells	
iCell-002a	Immortalized Human Pancreatic Cancer Associated Fibroblasts Cells	
iCell-0015a	Immortalized Human Aortic Endothelial Cells	
iCell-0031a	Immortalized Human Endometrial Epithelial Cells	
iCell-0032a	Immortalized Rat Brain Microvascular Endothelial Cells	
iCell-0033a	Immortalized Mouse Pulmonary Fibroblasts Cells	
iCell-0054a	Immortalized Mouse Epididymal Fat Stem Cells	
iCell-0034a	Mouse Hepatocellular Carcinoma Cells,HEPA1-6+LUC	HEPA1-6+LUC
iCell-0035a	Mouse osteosarcoma osteoblasts Cells,K7M2WT(K7M2-WT)+LUC	K7M2WT(K7M2-WT)+LUC
iCell-0046a	Immortalized Mouse Glomerular Mesangial Cells	
iCell-0036a	Immortalized Mouse Pancreatic Stellate Cells	
iCell-0047a	Immortalized Mouse Fat Stem Cells	
iCell-0037a	Immortalized Duck Brain Microvascular Endothelial Cells	
iCell-C023	Immortalized Duck Embryo Fibroblasts Cells	Duck embryo
iCell-0011a	Immortalized Duck Embryo Hepatic Stromal Cells	
iCell-0012a	Immortalized Goat Testicular Interstitial Cells	
iCell-0038a	Immortalized Hu-Sheep Rumens Epithelial Cells	
iCell-C005	Chinese Hamster Ovary Cells sub-clone K1,CHO-K1	CHO-K1(suspension cells)
iCell-0010a	Immortalized Porcine Fat Stem Cells	
iCell-0007a	Immortalized Porcine Tonsil Epithelial Cells	
iCell-0039a	Immortalized Porcine Hepatic Stellate Cell	
iCell-0017a	Immortalized Porcine Skeletal Muscle Satellite Cells	
iCell-0048a	Immortalized Porcine Endometrial Epithelium Cells	
iCell-0042a	Immortalized Porcine Nasal Cavity Epithelial cells	
iCell-0041a	Immortalized Rabbit Hepatic Stromal Cells	

## Cell Lines

Each unit contains >1 x 10<sup>6</sup> cells, packed in cryovial of 1ml cryopreserved cell suspension or T-25 flask of living cells

CAT. No.	Product Name	Abbreviation
iCell-h001	Human Ovarian Cancer Cells	3A0
iCell-h002	Human Glioblastoma Cells	A172
iCell-h003	Human Rhabdomyosarcoma Cells	A204
iCell-h004	Human Ovarian Cancer Cells	A2780
iCell-h005	Human Ovarian Cancer Paclitaxel Resistant Strain	A2780/Taxol
iCell-h006	Human T Lymphocyte Leukemia Cells	A3
iCell-h007	Human Malignant Melanoma Cells	A375
iCell-h008	Human Malignant Melanoma Cells	A375-EGFP
iCell-h009	Human Epidermal Cancer Cells	A431
iCell-h010	Human Kidney Cancer Cells	A498
iCell-h011	Human Lung Cancer Cells	A549
iCell-h012	Human Lung Cancer Cell Paclitaxel Resistant Strain	A549/Taxol
iCell-h013	Human Rhabdomyoblastoma Cells	A673
iCell-h014	Human Melanoma Cells	A875
iCell-h015	Human Renal Cell Adenocarcinoma Cells	ACHN
iCell-h016	Human Gastric Adenocarcinoma Cells	AGS
iCell-h017	Human Kidney Cancer Cells	ACHN
iCell-h018	Human Endometrial Adenocarcinoma Cells	AN3 CA
iCell-h019	Human Cervical Cancer Cells	AV3
iCell-h020	Human Retinal Pigment Epithelial Cells	ARPE-19
iCell-h021	Human Pancreatic Adenocarcinoma Cells	AsPC-1
iCell-h022	Human Thyroid Cancer Cells	Bcpap
iCell-h023	Human Bronchial Epithelial Cells	Beas-2b
iCell-h024	Human Hepatoma Cells	Bel-7402
iCell-h025	Human Hepatoma Cells	Bel-7405
iCell-h026	Human Gastric Cancer Cells	BGC-823
iCell-h027	Human Bladder Cancer Cells	BT-B
iCell-h028	Human Breast Ductal Carcinoma Cells	BT-474
iCell-h029	Human Breast Ductal Carcinoma Cells	BT-549
iCell-h030	Human Pancreatic Adenocarcinoma Cells	Bxpc-3
iCell-h031	Human Cervical Cancer Cells	C-33A
iCell-h032	Human Colon Cancer Cells	Caco-2
iCell-h033	Human Renal Clear Cell Carcinoma of Skin Metastasis Cells	Caki-1
iCell-h034	Human Lung Cancer Cells	Calu-1
iCell-h035	Human Lung Adenocarcinoma Cells	Calu-3
iCell-h036	Human Degenerative Cancer Cells	Calu-6
iCell-h037	Human Ovarian Adenocarcinoma Cells	Caov-3
iCell-h038	Human Pancreatic Cancer Cells	Capan-1
iCell-h039	Human Pancreatic Cancer Cells	Capan-02
iCell-h040	Human Cervical Cancer Cells	Caski
iCell-h041	Human Acute Lymphoblastic Leukemia Cells	CCRF-CEM
iCell-h042	Human Acute Lymphoblastic Leukemia Cells	CEM/C1
iCell-h043	Human Liver Cells	Chang Liver
iCell-h044	Human Ovarian Cancer Cells	CoCi
iCell-h045	Human Colon Cancer Cells	C0L0205
iCell-h046	Human Colorectal Cancer Cells	C0L0320
iCell-h047	Human Colorectal Cancer Cells	C0L0320 DM
iCell-h048	Human Colorectal Cancer Cells	C0L0320 HSR
iCell-h049	Human Colon Cancer Cells	CW2
iCell-h050	Human Colorectal Cancer Cells	CX-1
iCell-h051	Human Megakaryocyte Leukemia Cells	DAMI
iCell-h052	Human Burkitt'S Lymphoma Cells	DAUDI
iCell-h053	Human Colorectal Cancer Cells	DLD-1
iCell-h054	Human Prostate Cancer Cells	DU145
iCell-h055	Human Umbilical Vein Cell Fusion Cells	EA. hy926
iCell-h056	Human Esophageal Cancer Cells	Eca-109
iCell-h057	Human Bladder Cancer Cells	ECV-304
iCell-h058	Human Bladder Cancer Cells (Red Fluorescent Protein Marked)	ECV-304-RFP
iCell-h059	Human Bladder Cancer Cells	EJ
iCell-h060	Human Ovarian Clear Cell Carcinoma Cells	ES-2
iCell-h061	Human Adenocarcinoma Cell Line	F56
iCell-h062	Human Gastric Mucosal Cells	GES-1
iCell-h063	Human Hepatoma Cell Subtype	GS-HEPG2
iCell-h064	Human T Lymphoma Leukemia Cells	H9/HTLV-IIIB
iCell-h065	Human T Lymphoma Leukemia Cells	H9/Feeder Frec
iCell-h066	Human Immortalized Epidermal Cells	Hacat
iCell-h067	Human Mammary Epithelial Cells Integrated With Sv40 Gene	HBL-100
iCell-h068	Human Non-Small Cell Lung Cancer Cells	HCC827
iCell-h069	Human Uterine Squamous Cell Carcinoma Cells(High Differentiation)	HCC94
iCell-h070	Human Immortalized Brain Microvascular Endothelial Cells	HCMEC/D3
iCell-h071	Human Colon Cancer Cells	HCT116
iCell-h072	Human Colon Cancer Cells	HCT-15

CAT. No.	Product Name	Abbreviation
iCell-h073	Human Colon Cancer Cells Fluorouracil Resistant Strain	HCT15/FU
iCell-h074	Human Glioma Cells	HS683
iCell-h075	Human Skin Fibroblast Cells	Hsf
iCell-h076	Human Fibrosarcoma Cells	HT-1080
iCell-h077	Human Bladder Cancer Cells	HT-1376
iCell-h078	Human Colon Cancer Cells	HT-29
iCell-h079	Human Trabecular Meshwork Cells	HTMC
iCell-h080	Human Hepatoma Cells	Huh-7
iCell-h081	Human Colon Cancer Paclitaxel Resistant Strain	HCT15/Taxol
iCell-h082	Human Colorectal Cancer Cells	HCT-8
iCell-h083	Human Endometrial Adenocarcinoma Cells	HEC-I-A
iCell-h084	Human Endometrial Adenocarcinoma Cells	HEC-I-B
iCell-h085	Human Embryonic Kidney Cells	HEK-293
iCell-h086	Human Embryonic Kidney Cells	HEK-293A
iCell-h087	Human Leukocyte Leukemia Cells	HEL
iCell-h088	Human Cervical Cancer Cells	HeLa
iCell-h089	Human Cervical Cancer Cells	HELA XB
iCell-h090	Human Cervical Cancer Cells	HELA-S3
iCell-h091	Human Hepatoma Cells	Hep 3B2.1-7
iCell-h092	Human Hepatoma Cells	Hep G2
iCell-h093	Human Liver Cancer (HBV) Cells	Hep G2.2.15
iCell-h094	Human Sv40 Transfected Osteoblasts Cells	HF0B1.19
iCell-h095	Human Gastric Cancer Cells	HGC-27
iCell-h096	Human Renal Cortical Proximal Tubular Epithelial Cells	HK-2
iCell-h097	Human Renal Epithelial Cells	HKb20
iCell-h098	Human Promyelocytic Leukemia Cells	HL60
iCell-h099	Human osteosarcoma cells	HOS
iCell-h100	Human High Metastatic Ovarian Cancer Cells	H0-8910PM
iCell-h101	Human Pancreatic Cancer Cells	HPAC
iCell-h102	Human Pancreatic Ductal Cells	HPNE
iCell-h103	Human Feeder Layer Epithelial Cells	HPT-8
iCell-h104	Human Placental Cells	Hs 815. PI
iCell-h105	Human Breast Cancer Cells	HS578T
iCell-h106	Human Hepatoma Cells	Huh-7.5
iCell-h107	Human Hepatoma Cells	Huh-7.5.1
iCell-h108	Human T Lymphocyte Leukemia Cells	Hut-78
iCell-h109	Human Duodenal Adenocarcinoma Cells	HUTU-80
iCell-h110	Human Umbilical Vein Endothelial Cells	HUVEC
iCell-h111	Human Umbilical Vein Endothelial Cells	HUVEC-RFP
iCell-h112	Normal Ovarian Epithelial Cells	IOSE-80
iCell-h113	Human Endometrial Cancer Cells	Ishikawa
iCell-h114	Human Acute T Cell Leukemia Cells	J. gamma 1
iCell-h115	Human Bladder Transitional Cell Carcinoma	J82
iCell-h116	Human Pancreatic Cancer Cells	JF-305
iCell-h117	Human T Lymphocyte Leukemia Cells	Jurkat
iCell-h118	Human Chronic Myelogenous Leukemia Cell Line	K562
iCell-h119	Human K562 Adriamycin Resistant Cell Line	K562/ADR
iCell-h120	Human Oral Epithelial Cancer Cells	KB
iCell-h121	Human Glioma Cells	KNS-89
iCell-h122	Human Peripheral Blood Basophilic Leukemia Cells	KU812
iCell-h123	Human Esophageal Cancer Cells	Kyse30
iCell-h124	Human Glioma Cells	LN229
iCell-h125	Human Prostate Cancer Cells	LNCap
iCell-h126	Human Colorectal Cancer Cells	L0V0
iCell-h127	Human Colorectal Adenocarcinoma Cells	LS174T
iCell-h128	Human Hepatic Astrocyte Cells	LX-2
iCell-h129	Human Breast Cancer Cells	MCF-7
iCell-h130	Human Breast Cancer Cells (Luciferase Labeled)	MCF-7+luc
iCell-h131	Human Mammary Epithelial Cells	MCF-10A
iCell-h132	Human Breast Cells	MDA-KB2
iCell-h133	Human Breast Cancer Cells	MDA-MB-231
iCell-h134	Human Breast Cancer Cells	MDA-MB-231-GFP
iCell-h135	Human Breast Cancer Cells	MDA-MB-361
iCell-h136	Human Breast Cancer Cells	MDA-MB-453
iCell-h137	Human Breast Cancer Cells	MDA-MB-435s
iCell-h138	Human Breast Cancer Cells	MDA-MB-468
iCell-h139	Human Mesothelial Cells	MET-5A
iCell-h140	Human Osteosarcoma Cells	MG63
iCell-h141	Human Gastric Cancer Cells	MGC-803
iCell-h142	Human Hepatoma Cells	MHCC-97L
iCell-h143	Human High Metastatic Liver Cancer Cells	MHCC-97H
iCell-h144	Human Pancreatic Cancer Cells	MIA-PACA-2

CAT. No.	Product Name	Abbreviation
iCell-h145	Human Acute Lymphoblastic Leukemia Cells	M0LT-4
iCell-h146	Human Embryonic Lung Fibroblast Cells	MRC-5
iCell-h147	Human Acute Lymphoblastic Leukemia Cells	MT-4
iCell-h148	Human Invasive Choroidal Melanoma Cells	MUM2B
iCell-h149	Human Pre-B Acute Lymphoblastic Leukemia Cells	NALM-6
iCell-h150	Human Lung Cancer Cells	NCI-H23
iCell-h151	Human Non-Small Cell Lung Adenocarcinoma Cells	NCI-H157
iCell-h152	Human Lung Adenocarcinoma Cells	NCI-H441
iCell-h153	Human Non-Small Cell Lung Cancer Cells	NCI-H1299
iCell-h154	Human Lung Adenocarcinoma Cells	NCI-H1395
iCell-h155	Human Non-Small Cell Lung Cancer Cells	NCI-H1650
iCell-h156	Human Lung Adenocarcinoma Cells	NCI-H1975
iCell-h157	Human Lung Squamous Cells	NCI-H226
iCell-h158	Human Lung Cancer Cells	NCI-H292
iCell-h159	Human Non-Small Cell Lung Cancer Cells	NCI-H358
iCell-h160	Human Large Cell Lung Cancer Cells	NCI-H460
iCell-h161	Human Colorectal Adenocarcinoma Cells	NCI-H508
iCell-h162	Human Large Cell Lung Cancer Cells	NCI-H661
iCell-h163	Human Colon Cancer Cells	NCI-H716
iCell-h164	Human Gastric Cancer Cells	NCI-N87
iCell-h165	Human Gallbladder Cancer Cells	NOZ
iCell-h166	Human Kidney Cancer Cells	0S-RC-2
iCell-h167	Human Ovarian Cancer Cells	0V-90
iCell-h168	Ovarian Adenocarcinoma Cells	0VCAR-3
iCell-h169	Human Colorectal Cancer Cells	P53R
iCell-h170	Human Pancreatic Cancer Epithelial Cells	Pane 05.04
iCell-h171	Human Pancreatic Cancer Cells	PANC10.05
iCell-h172	Human Pancreatic Cancer Cells	PANC-1
iCell-h173	Human Pancreatic Cancer Cells	PATU 8988t
iCell-h174	Human Prostate Cancer Cells	PC-3
iCell-h175	Human Pancreatic Ductal Adenocarcinoma Cells	PL45
iCell-h176	Human Embryonic Kidney Cells	ProPaka. 6
iCell-h177	Human Normal Stem Cells	QSG-7701
iCell-h178	Human Lymphoma Cells	Raji
iCell-h179	Human B Lymphoma Cells	RAMOS RAI
iCell-h180	Human Rhabdomyosarcoma Cells	RD
iCell-h181	Human Acute Non-B Non-T Lymphocyte Leukemia Cells	REH
iCell-h182	Human Endometrial Cancer Cells	RL95-2
iCell-h183	Human Multiple Myeloma Cells	RPMI8226
iCell-h184	Human Bladder Transitional Cell Papilloma	RT4
iCell-h185	Human Prostate Normal Cells	RWPE-2
iCell-h186	Human Small Cell Lung Cancer	SBC-2
iCell-h187	Human Neuroblastoma Cells	SH-SY5Y
iCell-h188	Human Cervical Squamous Cell Carcinoma	SiHa
iCell-h189	Human Breast Cancer Cells	SK-BR-3
iCell-h190	Human Liver Ascites Adenocarcinoma Cells	SK-HEP-1
iCell-h191	Human Skin Melanoma Cells(Fluorescence Labeled)	SK-MEL-2+LUC
iCell-h192	Human Lung Squamous Cells	SK-MES-1
iCell-h193	Human Neuroepithelial Neoplasia Cells	SK-N-MC
iCell-h194	Human Neuroblastoma Cells	SK-N-SH
iCell-h195	Human Ovarian Cancer Cells	SK-OV-3
iCell-h196	Human Nephroblastoma Cells	SK-WEP-1
iCell-h197	Human Hepatoma Cells	SMMC-7721
iCell-h198	Human Glioma Cells	SNB-19
iCell-h199	Human Bladder Epithelial Immortalized Cells	SV-HUC-1
iCell-h200	Human Synovial Sarcoma Cells	SW982
iCell-h201	Human Colon Adenocarcinoma Cells	SW-1116
iCell-h202	Human Adrenal Small Cell Carcinoma	SW-13
iCell-h203	Human Pancreatic Cancer Cells	SW1990
iCell-h204	Human Colon Adenocarcinoma Cells	SW480
iCell-h205	Human Thyroid Cancer Cells	SW579
iCell-h206	Human Colorectal Cancer Cells	SW620
iCell-h207	Human Lymphoblastoid Cells	T2
iCell-h208	Human Bladder Transitional Cell Carcinoma	T24
iCell-h209	Human Breast Ductal Carcinoma Cells	T47D
iCell-h210	Human Glioblastoma Cells	T98G
iCell-h211	Human Esophageal Cancer Cells	TE-1
iCell-h212	Human Erythroleukemia Cells	TF-1
iCell-h213	Human Monocyte Leukemia Cells	THP-1
iCell-h214	Human Thyroid Cancer Cells	TT
iCell-h215	Human Laryngeal Cancer Cells	TU212
iCell-h216	Human Laryngeal Cancer Cells	TU686
iCell-h217	Human Brain Astrocyte Tumor	U118MG
iCell-h218	Human Osteosarcoma Cells	U20S
iCell-h219	Human Astrocytoma Cells	U251 MG(KO)
iCell-h220	Human Brain Astrocyte Tumor Cells	U87MG

CAT. No.	Product Name	Abbreviation
iCell-h221	Human Bladder Transitional Cell Carcinoma	UM-UC-3
iCell-h222	Human Prostate Cancer Cells	VCaP
iCell-h223	Human Retinal Glioma Cells	WERI-RB-I
iCell-h224	Human Embryonic Lung Fibroblast Cells	WI-38
iCell-h225	Human Melanoma Cells	WM-115
iCell-h226	Human Normal Prostate Matrix Immortalized Cells	WPMY-1
iCell-h227	Human Normal Liver Cells	WRL68
iCell-h228	Yunnan Xuanwei Human Lung Adenocarcinoma Cell Line	XWLC-05
iCell-h229	Yunnan Xuanwei Human Lung Adenocarcinoma Cell Line	XWLC-05 TEM8
iCell-h230	Human Prostate Cancer Cells	22Rv1
iCell-h231	Human Osteosarcoma Cells	143B
iCell-h232	Human Bladder Cancer Cells	5637
iCell-h233	Human High Metastatic Lung Cancer Cells	95-D
iCell-h234	Human High Metastatic Nasopharyngeal Carcinoma Cell Line	5-8F
iCell-h235	Human Renal Clear Cell Carcinoma Cells	786-0
iCell-h236	Human Renal Cell Adenocarcinoma Cells	769-P
iCell-h237	Human Embryonic Kidney Cells	293T
iCell-r001	Rat Thoracic Aorta Smooth Muscle Cells	A7r5
iCell-r002	Rat Pancreatic Exocrine Cells	AR42J
iCell-r003	Rat Liver Cells	BRL-3A
iCell-r004	Rat Brain Glioma Cells	C6
iCell-r005	Rat Liver Cancer Cells	CBRH7919
iCell-r006	Rat Hepatic Astrocyte Cells	CFSC-8B
iCell-r007	Rat Brain Astrocyte Cells	CTX
iCell-r008	Rat Brain Type I Astrocyte Cells	CTX-TNA
iCell-r009	Rat Brain Interstitial Cells	DI TNC1
iCell-r010	Rat Dorsal Root Ganglion Cells	DRG
iCell-r011	Rat Pituitary Tumor Cells	GH3
iCell-r012	Rat Cardiomyocyte Cells	H9C2
iCell-r013	Rat Mesangial Cells	HBZY-1
iCell-r014	Rat Immortalized Liver Lipid Storage Cells	HSC-T6
iCell-r015	Rat Ileum Cells	IEC-18
iCell-r016	Rat Small Intestine Crypt Epithelial Cells	IEC-6
iCell-r017	Rat Small Intestine Crypt Epithelial Cells	IEC-6 BHS
iCell-r018	Rat Myoblast Cells	L6
iCell-r019	Rat Breast Cancer Cells	MADB106
iCell-r020	Rat Retinal Cells	Muller
iCell-r021	Rat Alveolar Macrophage Cells	NR8383
iCell-r022	Rat Kidney Cells	NRK-52E
iCell-r023	Rat Oligodendrocyte Precursor Cell Line	OLN-93
iCell-r024	Rat Adrenal Pheochromocytoma Cells(Highly Differentiated)	PC12(Highly Differentiated)
iCell-r025	Rat Adrenal Pheochromocytoma Cells(Undifferentiated)	PC12(Undifferentiated)
iCell-r026	Rat Adrenal Pheochromocytoma Cells(Poorly Differentiated)	PC12(Poorly Differentiated)
iCell-r027	Rat Basophilic Leukemia Cells	RBL-2H3
iCell-r028	Rat Liver Cancer Cells	RH-35
iCell-r029	Rat $\beta$ Insulinoma Cells	RIN-m5f
iCell-r030	Rat Schwann Cells	RSC96
iCell-r031	Rat Spinal Cord Anterior Horn Motor Neuron Tumor Cells	VSC4. 1
iCell-m001	Mouse Macrophage Cells	Ana-1
iCell-m002	Mouse Airway Smooth Muscle Cells	ASMC
iCell-m003	Mouse Hepatocyte Cells	AML12
iCell-m004	Mouse Melanoma Cells	B16
iCell-m005	Mouse Melanoma Cells	B16B
iCell-m006	Mouse Melanoma Cells	B16-F10
iCell-m007	Mouse Proto-B Cell Line	BAF3
iCell-m008	Mouse Embryonic Fibroblast Cells	BALB/3T3 clone A31
iCell-m009	Mouse Brain Microvascular Endothelial Cell Line	Bend. 3
iCell-m010	Mouse Pancreatic Cancer Beta Cells	Beta_TC_6
iCell-m011	Mouse Microglia Cells	BV2
iCell-m012	Mouse Neural Stem Cells	C17. 2
iCell-m013	Mouse Myoblasts Cells	C2C12
iCell-m014	Mouse Colon Cancer Cells	CT26
iCell-m015	Mouse Colon Cancer Cells	CT26. WT
iCell-m016	Mouse Dendritic Cells	DC2. 4
iCell-m017	Mouse Lymphoma Cells	EL-4
iCell-m018	Mouse Mammary Epithelial Cells	HC11
iCell-m019	Mouse Liver Cancer Cells	HEPA1-6
iCell-m020	Mouse Hippocampal Neuron Cells	HT22
iCell-m021	Mouse Brain Glial Mother Cells	G422
iCell-m022	Mouse Spermatogonia Cells	GC-1 spg
iCell-m023	Mouse Kidney Inner Medullary Collecting Duct 3 Epithelial Cells	IMCD3
iCell-m024	Mouse Monocyte Macrophage Cells	J774A. 1
iCell-m025	Mouse Osteosarcoma Osteoblast Cells	K7M2 wt
iCell-m026	Mouse Fibroblast Cells	L929
iCell-m027	Mouse Lung Cancer Cells	LLC
iCell-m028	Mouse Pancreatic Cancer Cells	LTPA

CAT. No.	Product Name	Abbreviation
iCell-m029	Mouse Breast Cancer High Metastatic Cells	MA-891
iCell-m030	Mouse Bladder Cancer Cells	MB49
iCell-m031	Mouse Embryonic Osteoblast Cells	MC3T3-E1
iCell-m032	Mouse Colon Cancer Cells	MC38
iCell-m033	Mouse Embryonic Fibroblast Cells	MEF
iCell-m034	Mouse Embryonic Fibroblast Cells	MEF(Mitomycin treatment)
iCell-m035	Mouse Gastric Cancer Cells	MFC
iCell-m036	Mouse Lung Epithelial Cells	MLE-2
iCell-m037	Mouse Bone-Like Cells	ML0-Y4
iCell-m038	Mouse Liver Epithelial Cells	NCTC clone 1469
iCell-m039	Mouse Normal Liver Cells	NCTC 1469
iCell-m040	Mouse Brain Neuroma Cells	neuro-2a
iCell-m041	Mouse Embryonic Cells	NIH/3T3
iCell-m042	Mouse Bone Marrow Stromal Cells	OP9
iCell-m043	Mouse Teratoma Cells	P19
iCell-m044	Mouse Leukemia Cells	P388
iCell-m045	Mouse Mastocytoma Cells	P815
iCell-m046	Mouse Retrovirus Picking Cell Strain	PT-67
iCell-m047	Mouse Mononuclear Macrophage Leukemia Cells	RAW264. 7
iCell-m048	Mouse Kidney Cancer Cells	RENCA
iCell-m049	Mouse Retinal Ganglion Cells	RGC-5
iCell-m051	Mouse Prostate Cancer Cells	RM-1
iCell-m052	Mouse Hybridoma Cells	SDOW-17
iCell-m053	Mouse Myeloma Cells	Sp2/0
iCell-m054	Mouse Myeloma Cells	Sp2/0-Ag14
iCell-m055	Mouse Small Intestinal Endocrine Cells	STC-1
iCell-m056	Mouse Mesangial Cells	SV40-MES-13
iCell-m057	Mouse Lymph Node Endothelial Cells	SVEC4-10
iCell-m058	Mouse Leydig Cells	TM3
iCell-m059	Normal Mouse Testicular Sertoli Cells	TM4
iCell-m060	Mouse Cervical Cancer Cells	U14
iCell-m061	Mouse Lymphoma Cells	YAC-1
iCell-c001	Hamster Kidney Fibroblast Cells	BHK-21
iCell-c002	Chinese Hamster Lung Cells	CHL
iCell-c003	Hamster Ovary Cells	CHO
iCell-c004	Chinese Hamster Ovary Cell KI Subcloning	CHO-KI
iCell-c005	Chinese Hamster Ovary Cell KI Subclonal Suspension Cells	CHO-KII
iCell-c006	Chinese Hamster Ovary Cells	CTLA4 IG-24
iCell-c007	Hamster Ovary Cells	LEC-1
iCell-c008	Hamster Lung Cells	V79
iCell-c009	Chicken Lymphoma Cells	DT40
iCell-c010	Chicken Embryo Fibroblast Cells	UMNSAH/DF-1
iCell-c011	Marmoset Ebv-Transformed Leukocytes Cells	B95-8
iCell-c012	African Green Monkey Kidney Cell (Sv40 Transformed)	COS-7
iCell-c013	Rhesus Monkey Kidney Cells	MA-104
iCell-c014	African Green Monkey Kidney Cells	VERO
iCell-c015	African Green Monkey Kidney Cells	VERO E6
iCell-c016	Porcine Alveolar Macrophage Cells	3D4/21
iCell-c017	Porcine Kidney Cell Line	PK-1
iCell-c018	Porcine Kidney Cell Line	PK-13
iCell-c019	Porcine Kidney Cells	PK-15
iCell-c020	Porcine Turbinate Mucosal Fibroblast Cells	PT-K75
iCell-c021	Dog Kidney Transformed Cells	MDCK
iCell-c022	Sheep Lung Fibroblast Cells	OAR-L1
iCell-c023	Duck Embryo Fibroblast Cells	Duck embryo
iCell-c024	Zebrafish Embryo Fibroblast Cells	PAC2
iCell-h036	Human Breast Cancer Cells, MDA-MB-436	MDA-MB-436
iCell-h0018a	Human Lung Cancer Cells,A549+RFP	A549+RFP
iCell-h011a	Human Lung Cancer Cells,A549+luc	A549+luc
iCell-0045A	Human Umbilical Vein Endothelial Cells,HUV-EC-C	HUV-EC-C
iCell-0022A	Human Umbilical Vein Endothelial Cells,HUVEC-GFP	HUVEC-GFP
iCell-DRY0100	Human induced pluripotent stem cells,iPS	iPS
iCell-0026A	Human Pancreatic Cancer Cells, PANC-1/GEM	PANC-1/GEM
iCell-0021A	Human Brain Astrocyte Tumor Cells, U87MG-RFP	U87MG-RFP
iCell-h054	Human Normal Liver Cells, L02 HL-7702 L0-2	L02 HL-7702 L0-2
iCell-h134	Human Breast Cancer Cells,MDA-MB-231 luc	MDA-MB-231 luc
iCell-h191	Human Skin Melanoma Cells,SK-MEL-2	SK-MEL-2
iCell-h240	Human embryonic stem cell H9, h9 Feeder Frec	h9 Feeder Frec
iCell-h243	Human embryonic kidney cells, HEK-293	HEK-293 (293)
iCell-h244	Human astrocytes cells(Temozolomide resistant)	U251 MG/TMZ-LUC3000
iCell-h248	Human Colorectal Cancer Cells,LS513	LS513
iCell-h250	Human Prostate Cancer Cells,DU145	DU145
iCell-h251	Human placental villous cancer cells,JAR	JAR
iCell-h252	Human Colon Adenocarcinoma Cells,RKO	RKO
iCell-h253	Human Breast Cancer Adriamycin Resistant Cell Line,MCF7/adr	MCF-7/Adr
iCell-h258	Human cholangiocarcinoma cells, hccc-9810	hccc-9810

CAT. No.	Product Name	Abbreviation
iCell-h259	High metastasis human hepatoma cells, HCC-LM3	HCC-LM3
iCell-h260	Human embryonic lung fibroblast, IMR-90	IMR-90
iCell-h262	Human Lung Cancer Cells, NCI-H1703	NCI-H1703
iCell-h263	Human Lung Cancer Cells, pc-9	pc-9
iCell-h264	Human liver cancer cells, PLC/PRF/5	PLC/PRF/5
iCell-h265	Human hepatobiliary cancer cells	RBE
iCell-h266	Human Peripheral Lymphocytes ,U266	U266
iCell-h267	Human lymphoma cell, U-937	U-937
iCell-h268	Human liver cancer cells, Snu-182	Snu-182
iCell-h269	Human pharyngeal squamous cell carcinoma, FADu	FADu
iCell-h270	Human Tongue Squamous Cell Carcinoma ,CAL27	CAL-27
iCell-h271	Human Pancreatic Cancer Cells, PATU8988S	PATU8988S
iCell-h272	Human Renal Clear Cell Carcinoma Cells, CAKI-2	CAKI-2
iCell-h274	Human chorionic cancer cells, JEG-3	JEG-3
iCell-h275	Human Embryonic Kidney Cells, ProPakA.6	ProPakA.6
iCell-h276	Human bladder squamous cell carcinoma, SCaBER	SCaBER
iCell-h277	Human gastric adenocarcinoma cell, SGC-7901	SGC-7901
iCell-h278	Human Bladder Transitional Cell Carcinoma, SW780	SW780
iCell-h279	Human teratogenic cancer cells, NCCIT	NCCIT
iCell-r032	Rat Osteosarcoma Cells, UMR-106	UMR-106
iCell-m062	Mouse Embryonic Stem Cells, E14 (ES-E14TG2a)	E14
iCell-m063	Mouse Glioblastoma Cells, GL261	GL261
iCell-m064	Mouse ovarian epithelial cancer cells, ID8	ID8
iCell-m065	Mouse hybridoma cells (anti-CD2), OKT11	OKT11
iCell-m066	Mouse embryonic fibroblasts cells, 3T3-L1	3T3-L1
iCell-m067	Mouse breast cancer cell(Luciferase Labeled), 4T1+luc	4T1+luc
iCell-m068	Mouse breast cancer cell,4T1	4T1
iCell-m069	Mouse aortic endothelial cells, MAEC	MAEC
iCell-m070	Mouse lymphoma cell, L5178Y TK+/- clone (3.7.2C)	L5178Y TK+/- clone (3.7.2C)
iCell-0034a	Mouse Liver Cancer Cells, HEPA1-6-LUC	HEPA1-6-LUC
iCell-0035a	Mouse osteosarcoma osteoblasts, K7M2WT(K7M2-WT)-LUC	K7M2WT(K7M2-WT)-LUC
iCell-C009	Chinese Hamster Ovary Cells(cho-dhfr-)	cho-dhfr-
iCell-C025	African Green Monkey Kidney Cell,COS-1	COS-1
iCell-C028	Porcine hip arteries Endothelial cells, PIEC	PIEC
iCell-C029	Chicken lymphoma cells, DT40	DT40

## Cell Culture Media

CAT. No.	Product Name	Size/Quantity
iPSMed-iCELL-001	Human Induced Pluripotent Stem Cell (iPSC) Media	100ml/500ml
PriMed-iCELL-001	iCell Primary Epithelial Cell Media	100ml/500ml
PriMed-iCELL-002	iCell Primary Endothelial Cell Media	100ml/500ml
PriMed-iCELL-003	iCell Primary Fibroblast Media	100ml/500ml
PriMed-iCELL-004-LS	iCell Primary Smooth Muscle Cells Low Serum Media	100ml/500ml
PriMed-iCELL-004	iCell Primary Smooth Muscle Cell Media	100ml/500ml
PriMed-iCELL-005	iCell Primary Neuronal Cell Media	100ml/500ml
PriMed-iCELL-006	iCell Primary Oligodendrocyte Media	100ml/500ml
PriMed-iCELL-007	iCell Primary Astrocyte Media	100ml/500ml
PriMed-iCELL-008	iCell Primary Hepatocyte Media	100ml/500ml
PriMed-iCELL-009	iCell Primary Stellate Cell Media	100ml/500ml
PriMed-iCELL-010	iCell Primary Keratinocyte Media	100ml/500ml
PriMed-iCELL-011	iCell Primary Macrophage Media	100ml/500ml
PriMed-iCELL-012-SF	iCell Primary Mesenchymal Stem Cells Serum-Free Media	100ml/500ml
PriMed-iCELL-012	iCell Primary Mesenchymal Stem Cell Media	100ml/500ml
PriMed-iCELL-013	iCell Primary Endothelial Progenitor Cell Media	100ml/500ml
PriMed-iCELL-014	iCell Primary Neural Stem Cell Media	100ml/500ml
PriMed-iCELL-015	iCell Primary Peripheral Cell Media	100ml/500ml
PriMed-iCELL-016	iCell Primary Schwann Cell Media	100ml/500ml
PriMed-iCELL-017	iCell Primary Melanocyte Media	100ml/500ml
PriMed-iCELL-018	iCell Primary Skeletal Muscle Cell Media	100ml/500ml
PriMed-iCELL-019	iCell Primary Osteoblast Media	100ml/500ml
PriMed-iCELL-020	iCell Primary Chondrocyte Media	100ml/500ml
PriMed-iCELL-021	iCell Primary Mesangial Cell Media	100ml/500ml
PriMed-iCELL-022	iCell Primary Cardiomyocyte Media	100ml/500ml
PriMed-iCELL-023	iCell Primary Preadipocyte Media	100ml/500ml
PriMed-iCELL-024	iCell Primary Tumor Cell Media	100ml/500ml
PriMed-iCELL-025	iCell Primary Interstitial Cell Media	100ml/500ml
PriMed-iCELL-026	iCell Primary T Lymphocyte Media	100ml/500ml
PriMed-iCELL-027	iCell Primary Stromal Cell Media	100ml/500ml
PriMed-iCELL-028	iCell Primary Ovarian Granulocyte Media	100ml/500ml
PriMed-iCELL-029	iCell Primary Mast Cell Media	100ml/500ml
PriMed-iCELL-030	iCell Primary Dendritic (DC) Cell Media	100ml/500ml
PriMed-iCELL-031	iCell Primary Osteoclast Media	100ml/500ml
PriMed-iCELL-032	iCell Primary NK Cell Media	100ml/500ml
PriMed-iCELL-033	iCell Primary Sperm Cell Media	100ml/500ml
PriMed-iCELL-034	iCell Primary Endometrial Cell Media	100ml/500ml
PriMed-iCELL-035	iCell Primary B Lymphocyte Media	100ml/500ml
	Supplement	
PriSup-iCELL-001	Primary Epithelial Cell Culture Supplement	5ml
PriSup-iCELL-002	Primary Endothelial Cell Culture Supplement	5ml
PriSup-iCELL-003	Primary Fibroblast Culture Supplement	5ml
PriSup-iCELL-004	Primary Smooth Muscle Cell Culture Supplement	5ml
PriSup-iCELL-005	Primary Neuronal Cell Culture Supplement	10ml
PriSup-iCELL-006	Primary Oligodendrocyte Culture Supplement	5ml
PriSup-iCELL-007	Primary Astrocyte Culture Supplement	5ml
PriSup-iCELL-008	Primary Hepatocyte Culture Supplement	5ml
PriSup-iCELL-009	Primary Stellate Culture Supplement	5ml
PriSup-iCELL-010	Primary Keratinocyte Culture Supplement	5ml
PriSup-iCELL-011	Primary Macrophage Culture Supplement	5ml
PriSup-iCELL-012	Primary Mesenchymal Stem Cell Culture Supplement	50ml
PriSup-iCELL-013	Primary Endothelial Progenitor Cell Culture Supplement	5ml
PriSup-iCELL-014	Primary Neural Stem Cell Culture Supplement	10ml
PriSup-iCELL-015	Primary Peripheral Cell Culture Supplement	5ml
PriSup-iCELL-016	Primary Schwann Cell Culture Supplement	5ml
PriSup-iCELL-017	Primary Melanocyte Culture Supplement	5ml
PriSup-iCELL-018	Primary Skeletal Muscle Cell Culture Supplement	5ml
PriSup-iCELL-019	Primary Osteoblast Culture Supplement	5ml
PriSup-iCELL-020	Primary Chondrocyte Culture Supplement	5ml
PriSup-iCELL-021	Primary Mesangial Cell Culture Supplement	5ml
PriSup-iCELL-022	Primary Cardiomyocyte Culture Supplement	5ml
PriSup-iCELL-023	Primary Preadipocyte Culture Supplement	5ml
PriSup-iCELL-024	Primary Tumor Cell Culture Supplement	5ml
PriSup-iCELL-025	Primary Interstitial Cell Culture Supplement	5ml
PriSup-iCELL-026	Primary T Lymphocyte Culture Supplement	5ml
PriSup-iCELL-027	Primary Stromal Cell Culture Supplement	5ml
PriSup-iCELL-028	Primary Ovarian Granular Cell Culture Supplement	5ml
PriSup-iCELL-029	Primary Mast Cell Culture Supplement	5ml
PriSup-iCELL-030	Primary Dendritic Cell Culture Supplement	5ml
PriSup-iCELL-031	Primary Osteoclast Culture Supplement	5ml
PriSup-iCELL-032	Primary NK Cell Culture Supplement	5ml
PriSup-iCELL-033	Primary Spermatogonia Cell Culture Supplement	5ml
PriSup-iCELL-034	Primary Endometrial Cell Culture Supplement	5ml
PriSup-iCELL-035	Primary B Lymphocytes Culture Supplement	5ml

CAT. No.	Product Name	Size/Quantity
iCell-0001	DMEM Culture Media	500ml
iCell-0002	1640 Culture Media	500ml
iCell-0003	a-MEM Culture Media	500ml
iCell-0004	DMEM Low Sugar Culture Media	500ml
iCell-0005	DMEM/F12 Culture Media	500ml
iCell-0006	F12 Culture Media	500ml
iCell-0007	F12K Culture Media	500ml
iCell-0008	IMDM Culture Media	500ml
iCell-0009	L15 Culture Media	500ml
iCell-0010	M199 Culture Media	500ml
iCell-0011	Mccoys' s 5A Culture Media	500ml
iCell-0012	MEM Culture Media	500ml
iCell-0013	Neurobasal-A Culture Media	500ml
iCell-0014	iPS Culture Media	500ml
iCell-0015	Animal epithelial cells Culture Media Epicm-a	500ml
iCell-0016	Endothelial cells Culture Media ECM	500ml
iCell-0017	Epithelial Cells Culture Media Epicm	500ml

## Product use

The products are for research use only. It is not approved for human or animal use. It is not approved for in vitro diagnostic application.

## How to Order

You can contact your local distributor to order (Please refer to our website). If there is no distributor in your area, please refer to the following steps.

1. Send your inquiries via e-mail or directly enquire us by phone
2. Send us the official order via e-mail
3. Sign the business contract
4. A proforma Invoice will be sent
5. Complete prepayment procedure
6. Shipment will be arranged (via FedEx) once your payment is received

## Shipping & Storage

After reaching consensus with our customers, we would select one of the following methods based on weather conditions and transport distance.

1. Frozen Cells: we will ship the cryovial of 1 ml frozen cell suspension in a foam incubator filled with dry ice. Please thaw cells as soon as they are received. If it is not possible to initiate cell culture immediately, frozen cells can be stored at -80°C for 1 month.
2. Living Cells: we will ship living cells filled with complete culture media in T-25 cell culture flask at room temperature. Please observe cell growth under a microscope as soon as they are received, and subculture cells instantly when they are > 85% confluent. For adherent cell type, if suspension cells continue to grow, please place the flask in the incubator for overnight stationary culture, which can help the living suspension cells to grow again and adhere to wall.

## Products Warranty

Customers must notify iCell within a week of receiving goods to be eligible for a replacement. You can refer to our website to get the details of the After-Sales Service Notice.

The logo for iCell, featuring the text "iCell" in a white, sans-serif font centered within a white rounded square.

+86-21-54321128



sales@icellbioscience.com  
eddiehuang@icellbioscience.com



www.icellbioscience.net



200231



2nd Floor, Building 3, No. 466 Yindu Road,  
Juke Biotech Park, Xuhui District, Shanghai, China



iCell Bioscience Inc, Shanghai