

HiQ Blueye Protein Marker

Cat No.	Pack Size
A0026	2×250µl
A0027	10×250µl

- 3µl or 5µl per loading for clear visualization during electrophoresis on 15-well or 10-well mini-gel, respectively.
- 1.5~2.5µl per well for general Western transferring.
- Apply more for thicker (> 1.5mm) or larger gel.

Product description

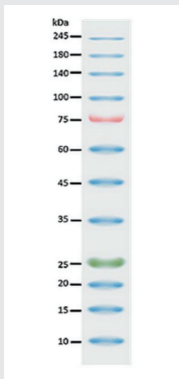
The HiQ Blueye Prestained Protein Marker is a three-color protein standard with 12 pre-stained proteins covering a wide range molecular weights from 10 to 245kDa. Proteins are covalently coupled with a blue chromophore except for two reference bands (one green and one red band at 25kDa and 75kDa respectively) when separated on SDS-PAGE (Tris-glycine buffer). The HiQ Blueye Prestained Protein Marker is designed for monitoring protein separation during SDS-polyacrylamide gel electrophoresis, verification of Western transfer efficiency on membranes (PVDF, nylon, or nitrocellulose) and for approximating the size of proteins. The marker is supplied in gel loading buffer and is ready to use.

Contents

Approximately 0.1~0.4mg/ml of each protein in the buffer (20mM Tris-phosphate, pH 7.5 at 25°C), 2% SDS, 0.2mM Dithiothreitol, 3.6M Urea, and 15% (v/v) Glycerol).

Quality Control

Under suggested conditions, HiQ Blueye Prestained Protein Marker resolves 12 major bands in 15% SDS-PAGE (Trisglycine buffer) and after western blotting to nitrocellulose membrane.



Storage

- Stable for up to 2 weeks at 25°C.
- Stable for up to 3 months at 4°C.
- For long term storage, store at -20°C.

(주) 바이오디

T. 02.6264.3399 E. cs@biod.co.kr

