

BlotCycler™ mini

by PRECISION BIOSYSTEMS

Automated Western Blot Processor

Choose from 4 sizes of trays for membrane and solution

Buffers are automatically dispensed from the polycarbonate bottle



Use the Touch Screen for selecting preset protocols or designing new ones.

Capture and save primary antibodies. Place collection vials under the trays.

How *BlotCycler Mini* works:

BlotCycler Mini is a compact bench-top device that automates processing of 1 to 8 western blots simultaneously. Blots are placed in specialized trays - choose from delta, mini, midi or mega sizes. Add primary and secondary antibodies, and washing buffers and you're ready to go!

Protocol steps are programmed using the touch screen; set the blocking time, washing steps, addition of antibodies, and incubation time. Each step is performed precisely, from the timing to the management of solutions and

buffers. The membranes are agitated efficiently and consistently, buffers are thoroughly drained, and antibody is automatically added.

Primary antibodies may be collected and saved for reuse. Once blots are removed, a cleaning cycle prepares the system for the next run. **BlotCycler Mini** works with established protocols, uses standard reagents, requires only about 16" x 10" of bench space and works with standard electrical power. It's built in the USA using patented technology.

BlotCycler Mini specifications:

Input voltage:	110 – 120V or 220 – 240V
Input voltage:	4A max
Polyurethane trays	
Delta	4 cm x 10 cm
Mini	10 cm x 8 cm
Midi	15 cm x 10 cm
Mega	30 cm x 10 cm
Dimensions:	44 cm W x 30 cm H x 26 cm D
Weight:	15 lbs.

- **Eliminate variations that occur when protocols are performed manually**
- **Fits into existing workflow using standard protocols and reagents**
- **Program up to 100 protocol steps, and save up to 40 protocols in the internal memory**
- **Performs washing steps automatically after each test**
- **Delivers worry-free performance using patented fluid control handling**

(주)바이오디 (우.14322) 경기도 광명시 하안로 60 광명테크노파크 A동 1101호 www.biod.co.kr
T_02.6264.3399 F_02.6264.3400 E_고객: cs@biod.co.kr / 업체: ds@biod.co.kr



BlotCyclerTM mini

by PRECISION BIOSYSTEMS

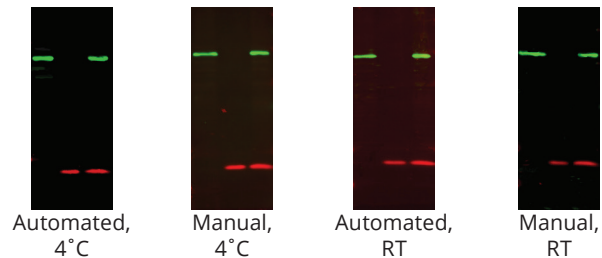
Automated Western Blot Processor

Traditional western blot analysis is a time-consuming process. **BlotCycler Mini** changes everything by automating the fluid changes and timing associated with blocking, washing and antibody incubation.

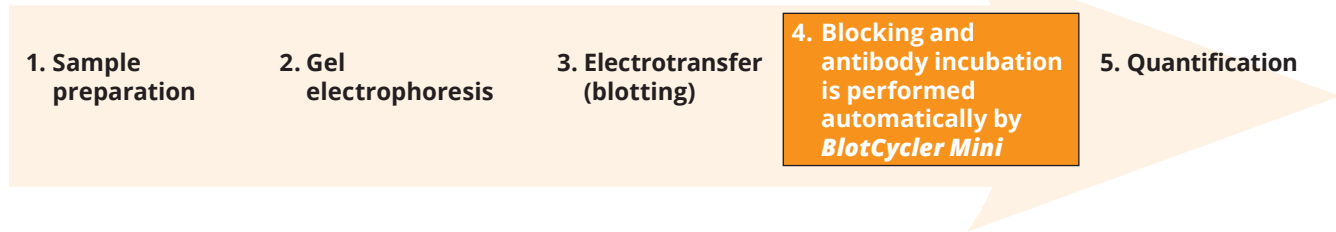
There's no more need to watch over the western blot procedure. With **BlotCycler Mini**, simply set up your protocol, and walk away!

Blot-to-blot consistency. Time after time.

The first lane in each blot shown at left contains a HeLa whole cell lysate, the second lane contains a recombinant human IL-2, and the third lane a mixture of HeLa whole cell lysate and hIL2



The NEW Western Blot Workflow:



About Precision Biosystems

BlotCycler and **BlotCycler Mini** were developed by Precision Biosystems, a Massachusetts-based company that provides solutions to help researchers automate time-consuming tasks in their laboratories.

082019

(주)바이오디 (우.14322) 경기도 광명시 하안로 60 광명테크노파크 A동 1101호 www.biod.co.kr
T_02.6264.3399 F_02.6264.3400 E_고객: cs@biod.co.kr / 업체: ds@biod.co.kr

