

eZwest™ Lite

Automated Western Device



Consistent Results



Antibody Saving



Programmable



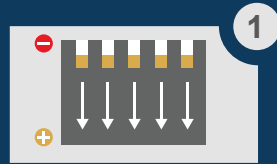
Completely Hands-off

eZwest™ is a fully automated Western Blotting device completing the entire process of blocking, antibody incubation and washing steps. The device is easy to use and has minimal footprint.

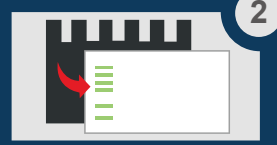
- **Consistent Results:** Fully automated operation ensuring consistency every time
- **Antibody saving:** Recover the primary antibody for re-use
- **Programmable:** Easily customizable program for protocol need

Simplify & Save Hours of Labor in Your Western Blot Workflow

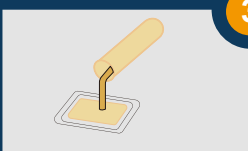
Conventional



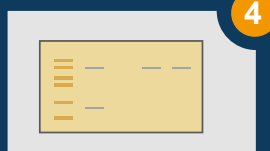
Perform electrophoresis



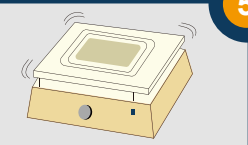
Transfer protein to blot



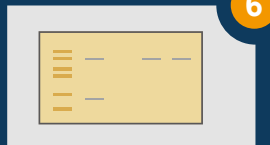
Block with blocking buffer



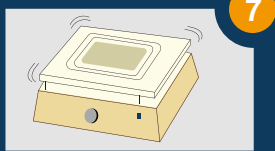
Incubate with primary antibody



Wash 3 times with wash buffer



Incubate with secondary antibody



Wash 3 times with wash buffer

With GenScript



SurePage™ pre-cast gel



eBlot™ L1 Protein Transfer System



eZwest™ Lite Automated Western Device

Results Comparison

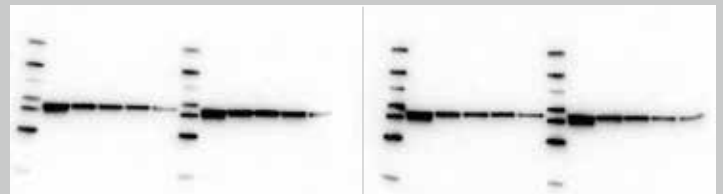
EGFR



Conventional

eZwest™

β-actin (42KD)



Conventional

eZwest™

eZwest™ produces similar or better results compared to results from the conventional method. Additionally, eZwest™ delivers **consistent and reproducible** results every time.