

ECL solution

Selection guide

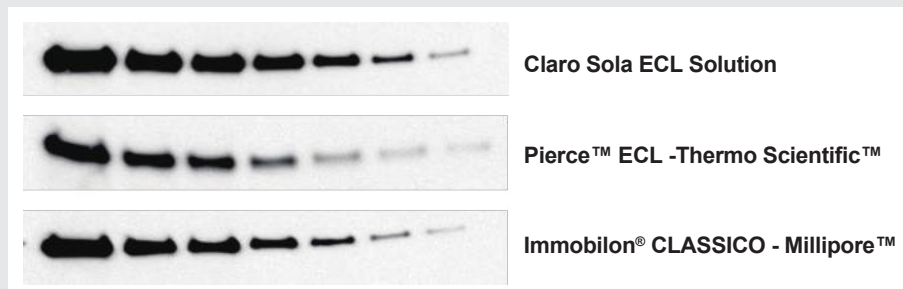
Various levels of sensitivity available for your Western blotting

BioD offers a family of products with different sensitivity, allowing from picogram to femtogram detection range. Our proprietary technology enables fine-tuning of signal intensity to obtain the best assay sensitivity and signal duration for every experimental need.

Cat. No.	Product Name	Pack Size	Competitors
HQS071,0250	Claro Sola	2x125ml	PIERCE™ ECL PLUS - THERMO SCIENTIFIC™ IMMOBILON® CLASSICO - MILLIPORE™ WESTERN LIGHTNING™ PLUS - PERKINELMER WESTERNBRIGHT™ ECL - ADVANSTA CLARITY™ - BIO-RAD
HQS070,0250	Claro Mucho	2x125ml	SUPERSIGNAL™ WEST DURA - THERMO SCIENTIFIC™ AMERSHAM™ ECL™ PRIME - GE HEALTHCARE SUPERSIGNAL™ WEST PICO PLUS - THERMO SCIENTIFIC™ IMMOBILON® CRESCENDO - MILLIPORE™ WESTERNBRIGHT™ QUANTUM™ - ADVANSTA
HQS075,0100	Claro Supremo	2x50ml	SUPERSIGNAL™ WEST DURA - THERMO SCIENTIFIC™ AMERSHAM™ ECL PRIME™ - GE HEALTHCARE IMMOBILON® FORTE - MILLIPORE™ IMMOBILON® - MILLIPORE™ WESTERN LIGHTNING™ PRO - PERKINELMER CLARITY MAX™ - BIO-RAD
HQS3,0100	Claro SupremoPlus	2x50ml	SUPERSIGNAL™ WEST FEMTO - THERMO SCIENTIFIC™ AMERSHAM™ ECL SELECT™ - GE HEALTHCARE WESTERNBRIGHT™ SIRIUS™ - ADVANSTA WESTERN LIGHTNING™ ULTRA - PERKINELMER

Claro Sola ECL Solution

Substrate for very abundant target and sample.
Stable light output optimal for low picogram detection level.



Western blotting detection of HDAC-1 on Hela cell lysate with Claro Sola ECL Solution and its competitors.

Sample: Two-fold dilution of Hela cell lysate from 5 µg to 0.078 µg Primary antibody: Rabbit-anti Human HDAC-1 1:2000.

Secondary antibody: Goat anti-rabbit IgG HRP 1:20000.

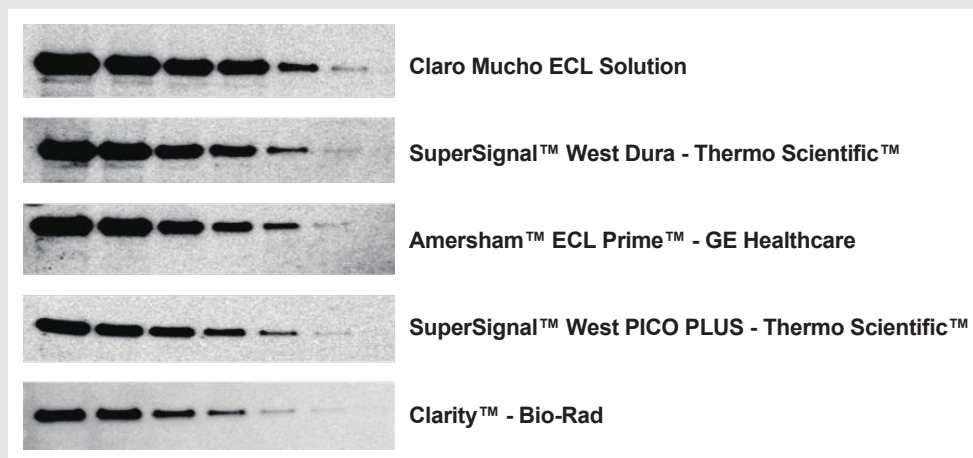
Exposure time: 180 seconds.

Claro Mucho ECL Solution

Versatile substrate for a mid-femtogram detection level.

Minimal protocol optimization required.

The high sensitivity combined with a broad linear dynamic range for accurate quantification of both low and high abundance proteins in the same experiment. Extremely long signal duration.



Western blotting detection of HDAC-1 on Hela cell lysate with Claro Mucho ECL Solution and its competitors.

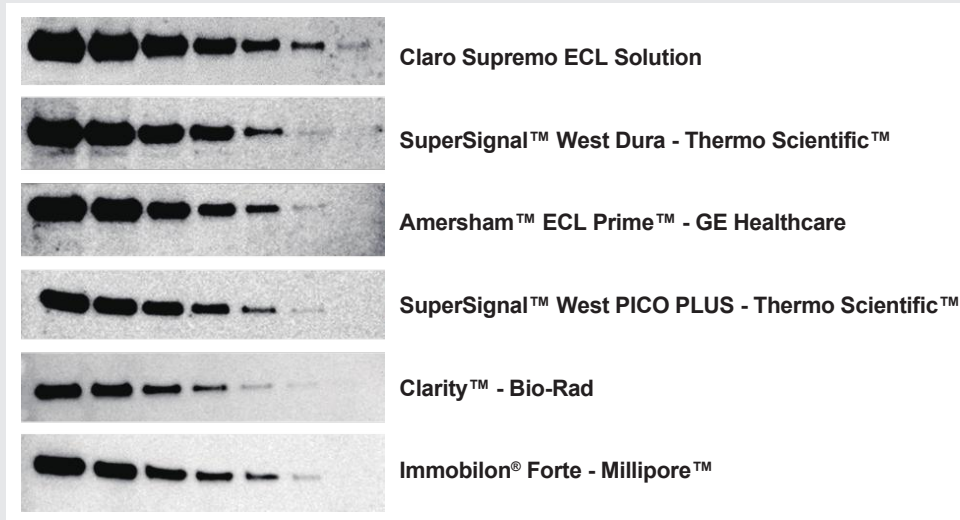
Sample: Two-fold dilution of Hela cell lysate from 5 µg to 0.078 µg Primary antibody: Rabbit-anti Human HDAC-1 1:5000.

Secondary antibody: Goat anti-rabbit IgG HRP 1:75000.

Exposure time: 180 seconds.

Claro Supremo ECL Solution

Perfect choice for applications requiring very high sensitivity and extended signal duration. The strong signal in the presence of weak background, allows a high signal-to-noise ratio for mid to low femtogram detection level.



Western blotting detection of HDAC-1 on Hela cell lysate with Claro Supremo ECL Solution and its competitors

Sample: Two-fold dilution of Hela cell lysate from 5 µg to 0.078 µg Primary antibody: Rabbit-anti Human HDAC-1 1:7500.

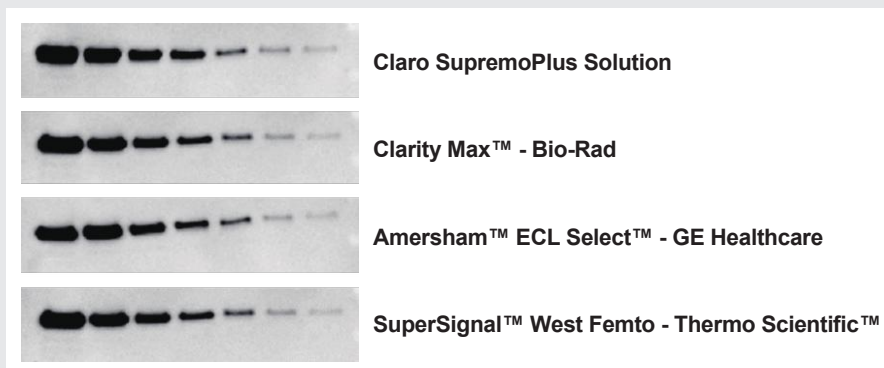
Secondary antibody: Goat anti-rabbit IgG HRP 1:100000.

Claro SupremoPlus Solution

An ultra-sensitive substrate with low-femtogram detection level.

The excellent signal intensity and sensitivity allow detecting limited amounts of proteins with fewer antibodies.

Wide-linear dynamic range and ultra-high sensitivity are optimal for quantitative analysis.



Western blotting detection of HDAC-1 on Hela cell lysate with Claro SupremoPlus Solution and its competitors.

Sample: Two-fold dilution of Hela cell lysate from 2.5 µg to 0.039 µg Primary antibody: Rabbit-anti Human HDAC-1 1:10000.

Secondary antibody: Goat anti-rabbit IgG HRP 1:300000. Exposure time: 120 seconds.